

USB Bi-Directional – Windows CE SDK – C#

This sample application demonstrates USB and Bluetooth connectivity between a WinCE device and a Zebra printer. The application was developed using Microsoft Visual Studio 2008, .NET Framework 3.5, Windows CE 5.0 and ZebraLink SDK V1.0.121.

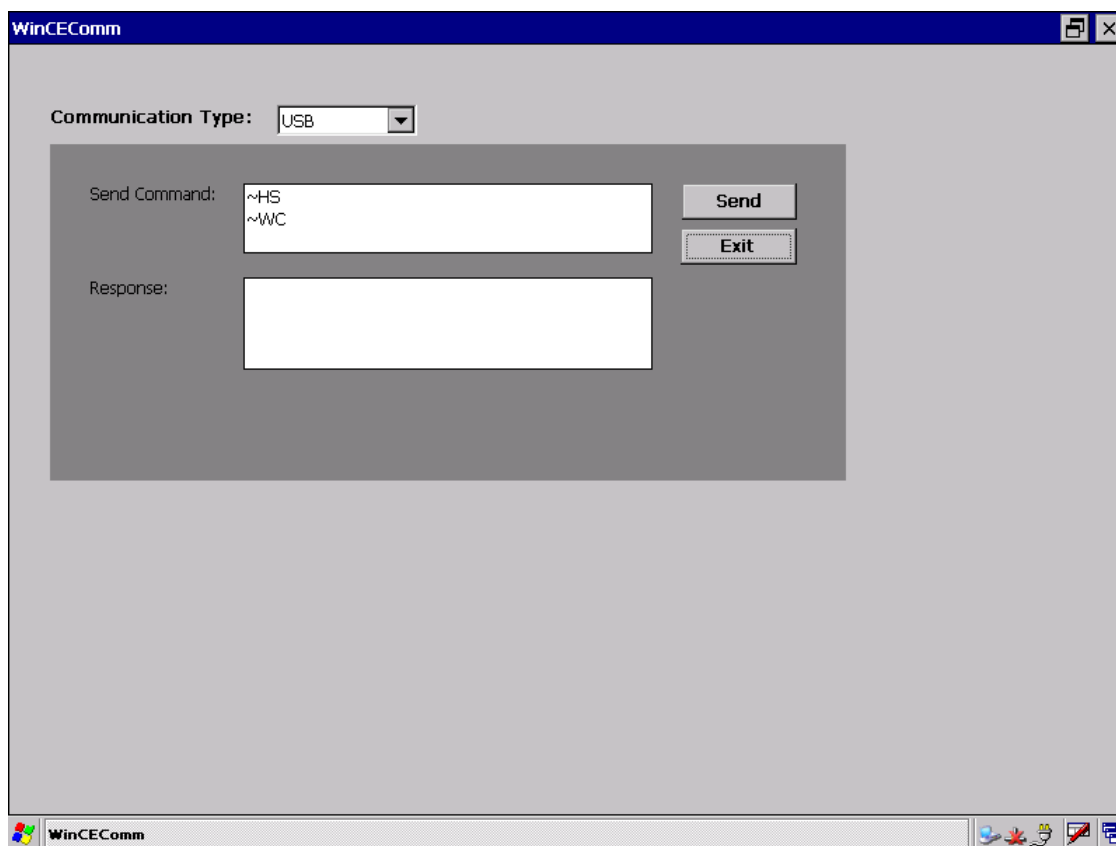
Note: The USB connectivity is not supported with the Zebra Mobile printers.

This application is provided AS-IS, for example purposes only.

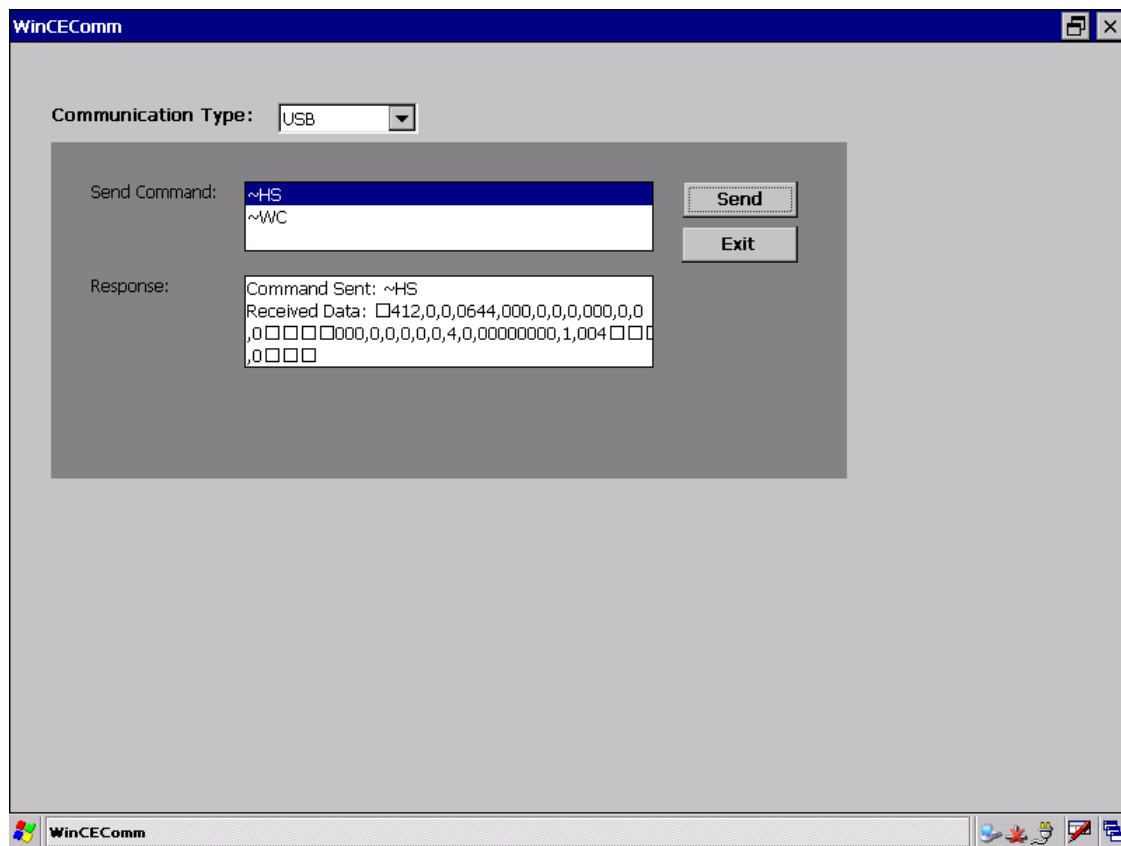
This sample application demonstrates various features of the ZebraLink SDK. Specifically, this application demonstrates the following features:

- USB Connectivity
- Bluetooth Connectivity

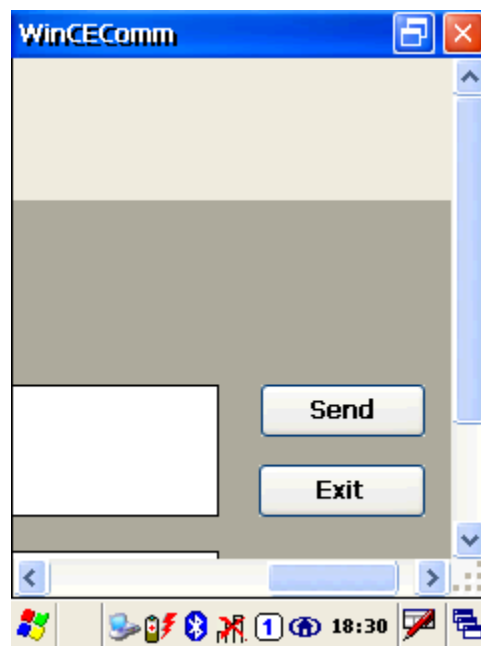
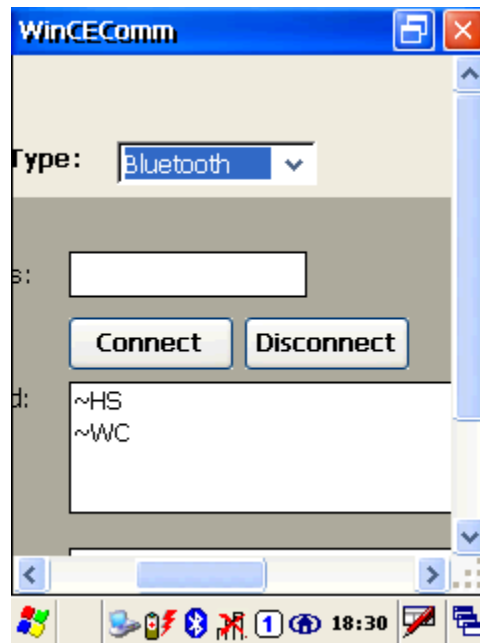
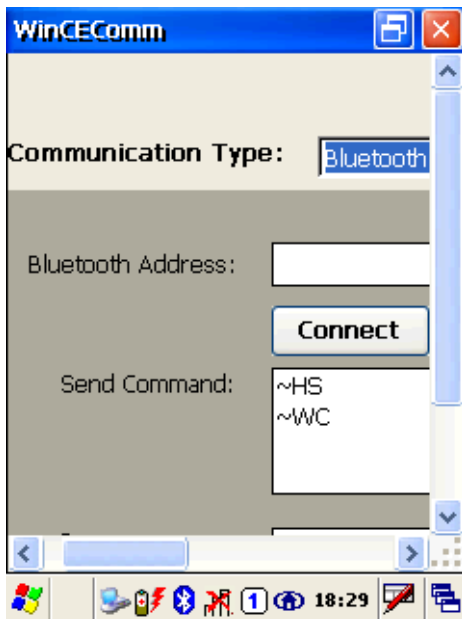
On startup, the following screen is displayed.



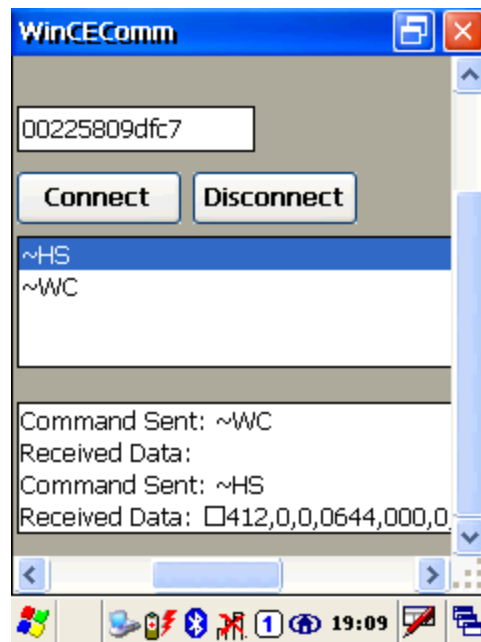
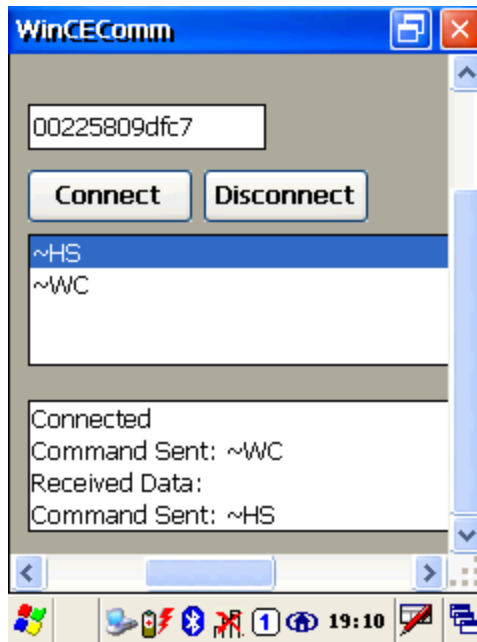
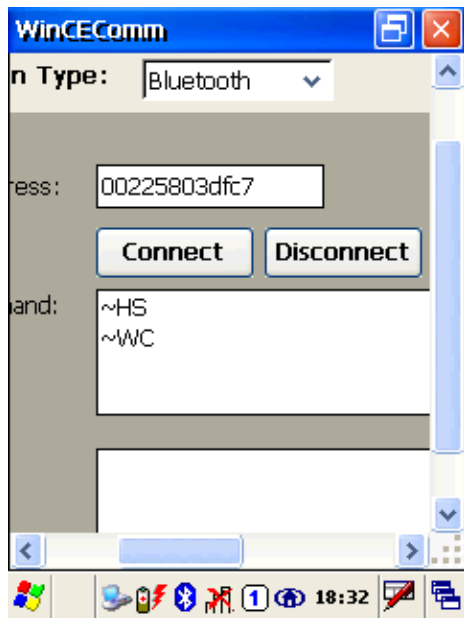
Select a command to be sent and then press 'Send' button. The response of sent command displays in the listbox.



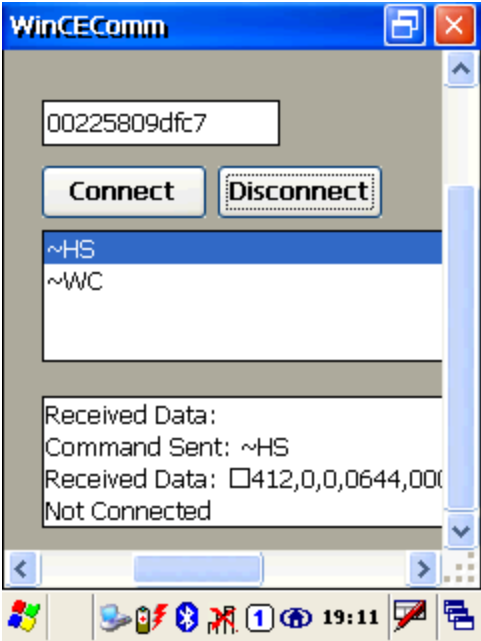
Select the Communication Type to 'Bluetooth' and the application displays the Bluetooth panel as shown in below images.



Enter Bluetooth mac address and then press 'Connect' button. This will create a Bluetooth connection with the Zebra printer and the status will be reflected in response listbox. Select a command to be sent and then press 'Send' button. The response of a command displays as below:



Press 'Exit' button to close the application.



Document Control

Version	Date	Description
1.0	17-Nov-11	Initial Release

All links and information correct at time of writing
Created for the Zebra Global ISV Program by Zebra Development Services

*Specifications subject to change without notice.
©2009 ZIH Corp. EPL, APL, ZBI 2.0, ZBI-Developer, Element Energy Equalizer, E 3, ZebraLink, EPL2, ZebraNet, and all product names and numbers are Zebra trademarks, and Zebra, the Zebra head graphic stripe, ZPL, ZebraNet, and ZPL II are registered trademarks of ZIH Corp. All rights reserved. Unicode is a trademark of Unicode, Inc. CG Triumvirate is a trademark of Agfa Division, Miles In c. IBM is a registered trademark of International Business Machines Corporation. UFST is a trademark of Monotype Imaging Inc. a nd may be registered in certain jurisdictions. All other trademarks are the property of their respective owners.

Corporate Headquarters
+1 800 423 0442
E-mail: inquiry4@zebra.com

Asia-Pacific Headquarters
+65 6858 0722
E-mail: apacchannelmarketing@zebra.com

EMEA Headquarters
+44 (0)1628 556000
E-mail: mseurope@zebra.com

Latin America Headquarters
+1 847 955 2283
E-mail: inquiry4@zebra.com

Other Locations
USA: California, Georgia, Rhode Island, Texas, Wisconsin Europe: France, Germany, Italy, Netherlands, Poland, Spain, Sweden Asia Pacific: Australia, China, Japan, South Korea
Latin America: Argentina, Brazil, Florida (USA), Mexico Africa/Middle East: India, Russia, South Africa, United Arab Emirates



SEE MORE.
DO MORE.