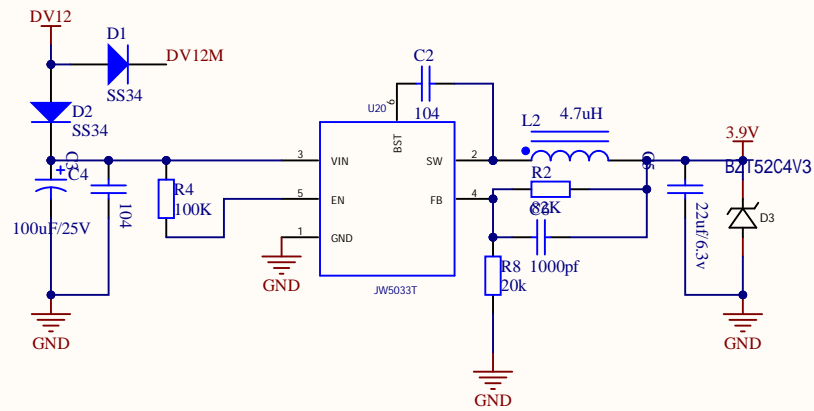


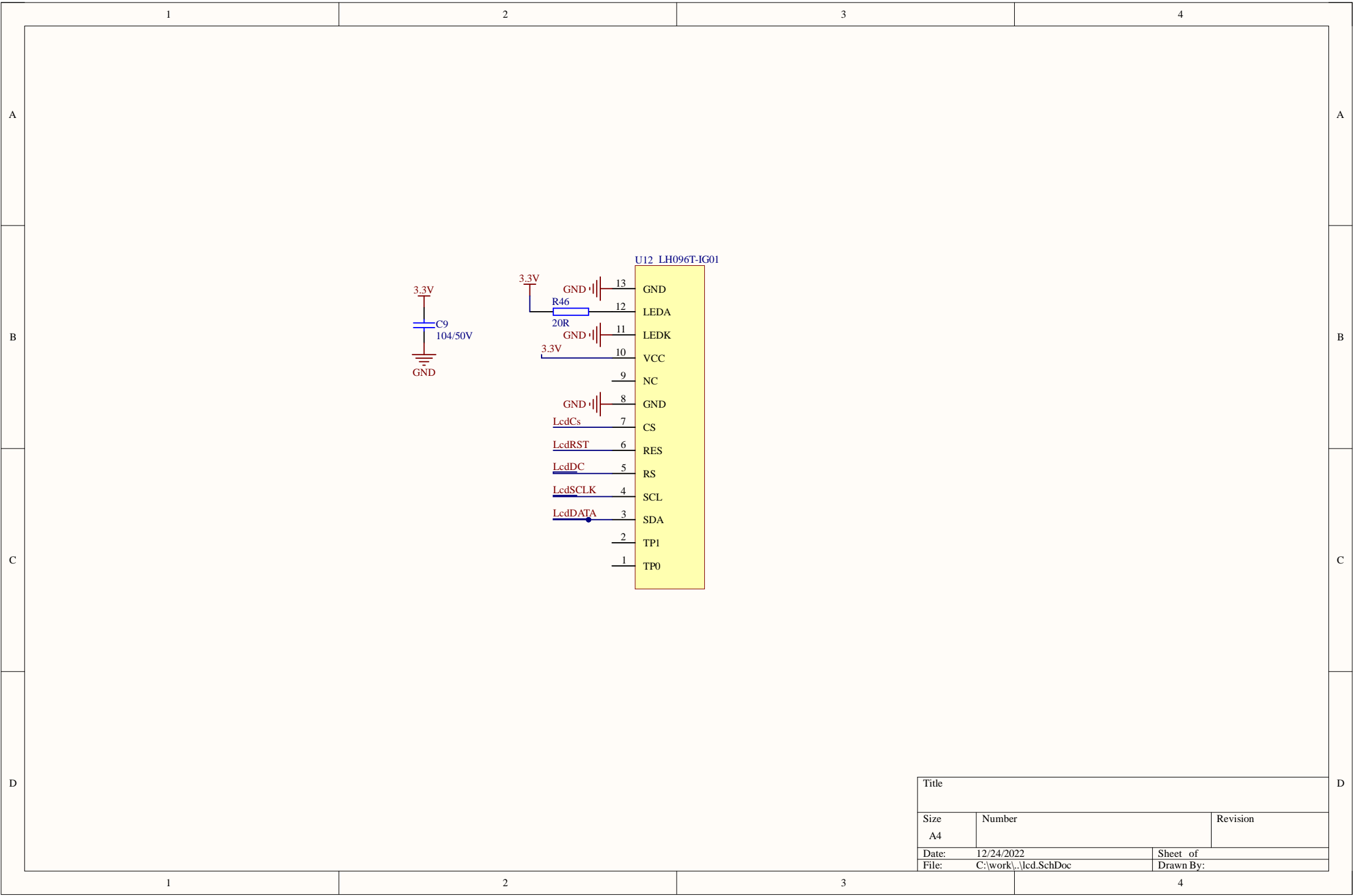
In7 GPIO23
In6 GPIO31
In5 GPIO30
In4 GPIO28

In3 GPIO4
In2 GPIO5
In1 GPIO29
In0 GPIO19

Title		
Size A4	Number	Revision
Date:	12/24/2022	Sheet of
File:	C:\work\光耦输入.SchDoc	Drawn By:



Title		
Size A4	Number	Revision
Date: 12/24/2022	Sheet of	
File: C:\work\...\电源.SchDoc	Drawn By:	



A

B

C

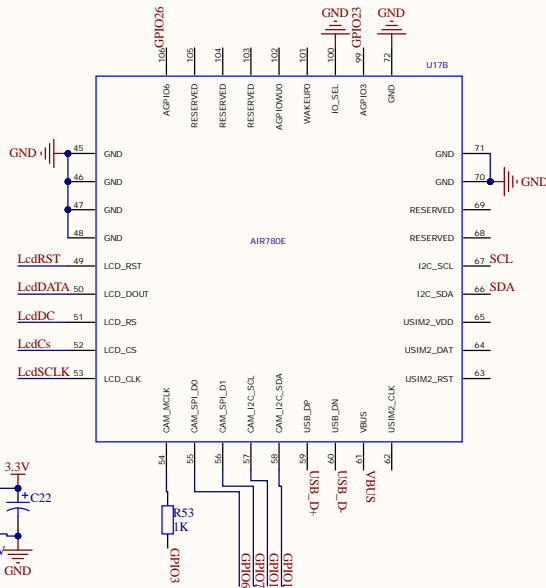
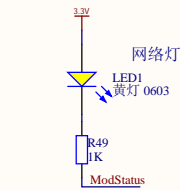
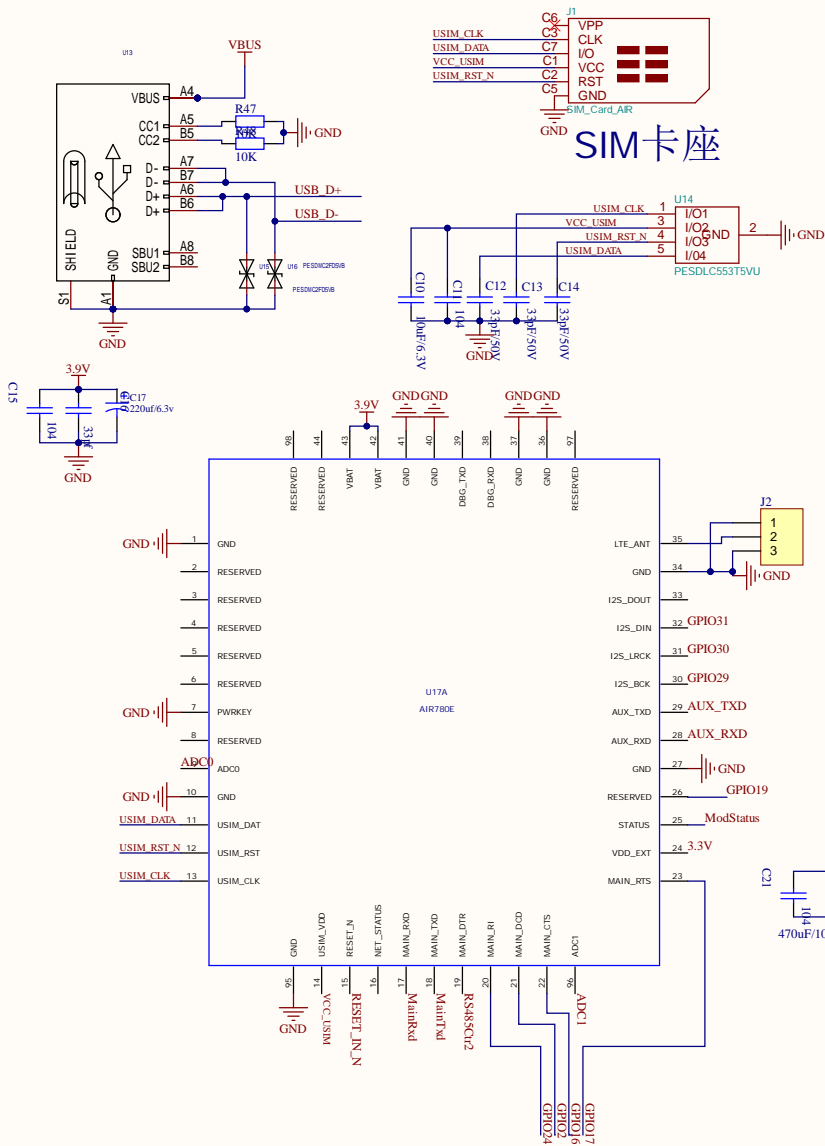
D

A

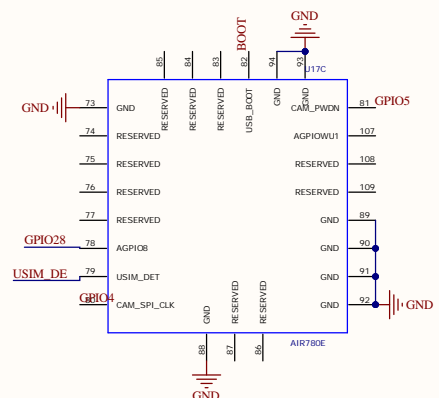
B

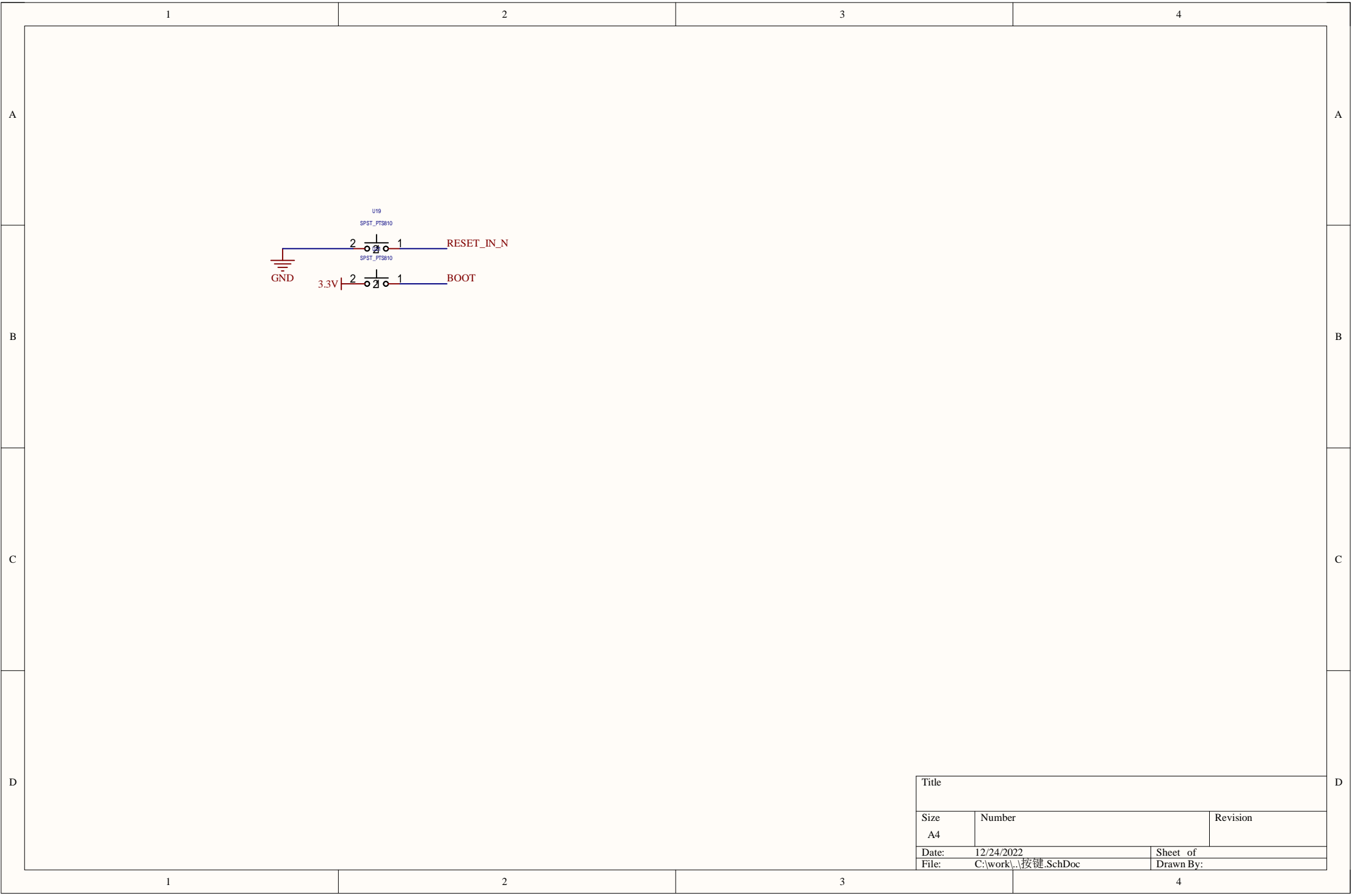
C

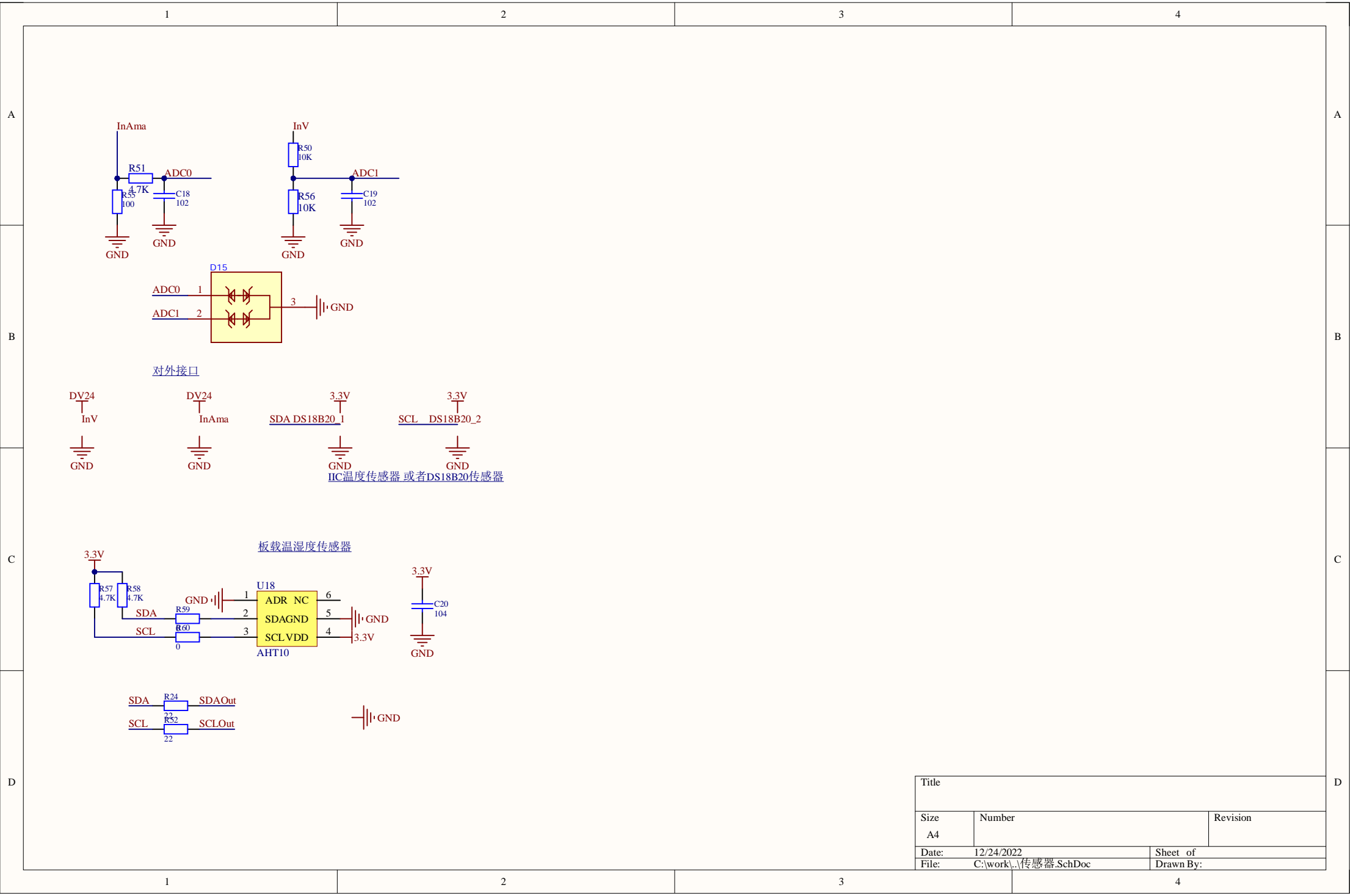
D



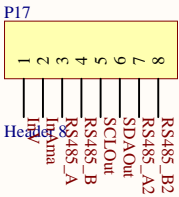
RS485Ctrl1







1	2	3	4
A			A
B			B
C			C
D			D
1	2	3	4



Title		
Size A4	Number	Revision
Date:	12/24/2022	Sheet of
File:	C:\work\...\接口.SchDoc	Drawn By: