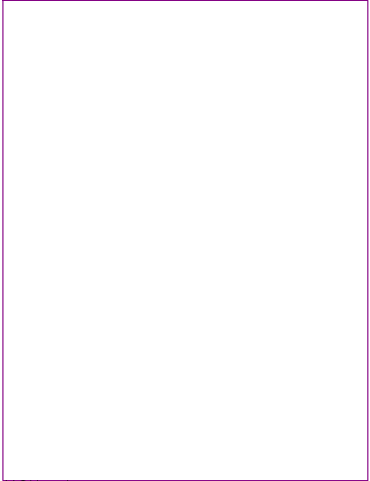


	1	2	3	4	5	6
A						A
B						B
C						C
D						D

SheetMCU



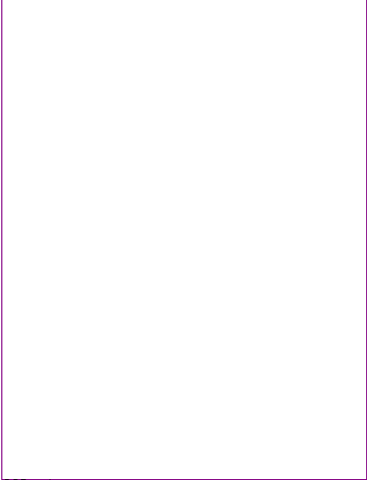
MCU.sch

SheetPower



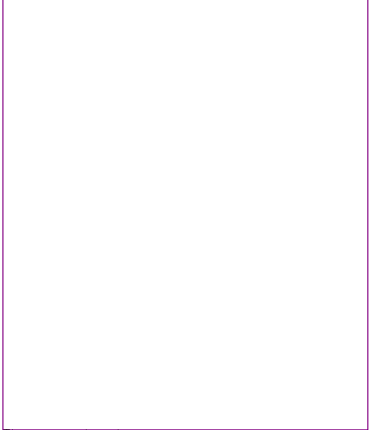
PowerRegulators.sch

SheetSSR

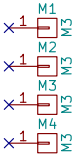


SSR.sch

SheetThermocouple

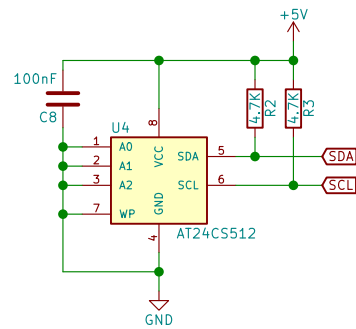
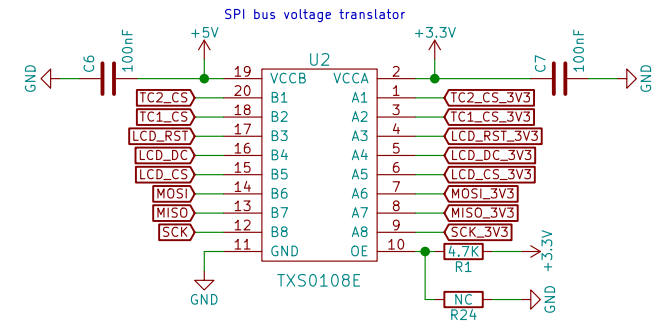
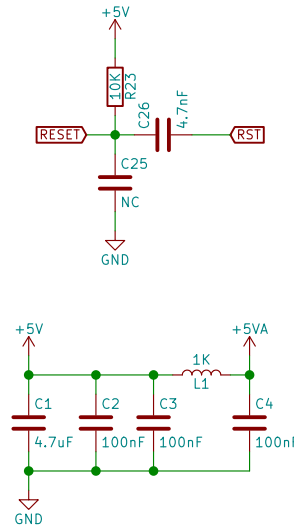
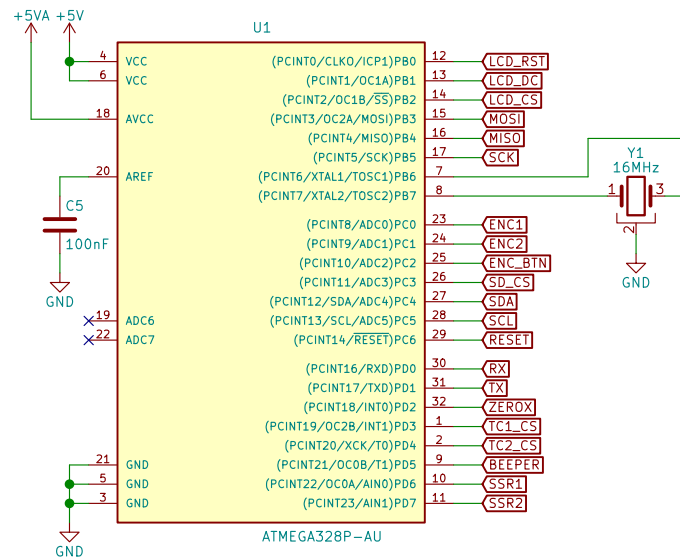


Thermocouple.sch

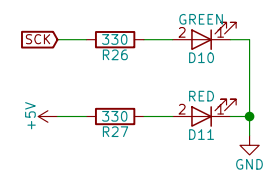
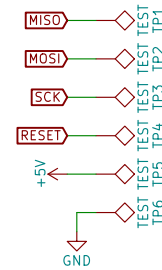


Mounting Holes

Sheet: /		
File: ReflowOvenController.sch		
Title: Index Page		
Size: A4	Date:	Rev:
KiCad E.D.A. kicad (5.0.0)		Id: 1/5



The AT24CS512 is currently not used,
it may be used to store more profiles.



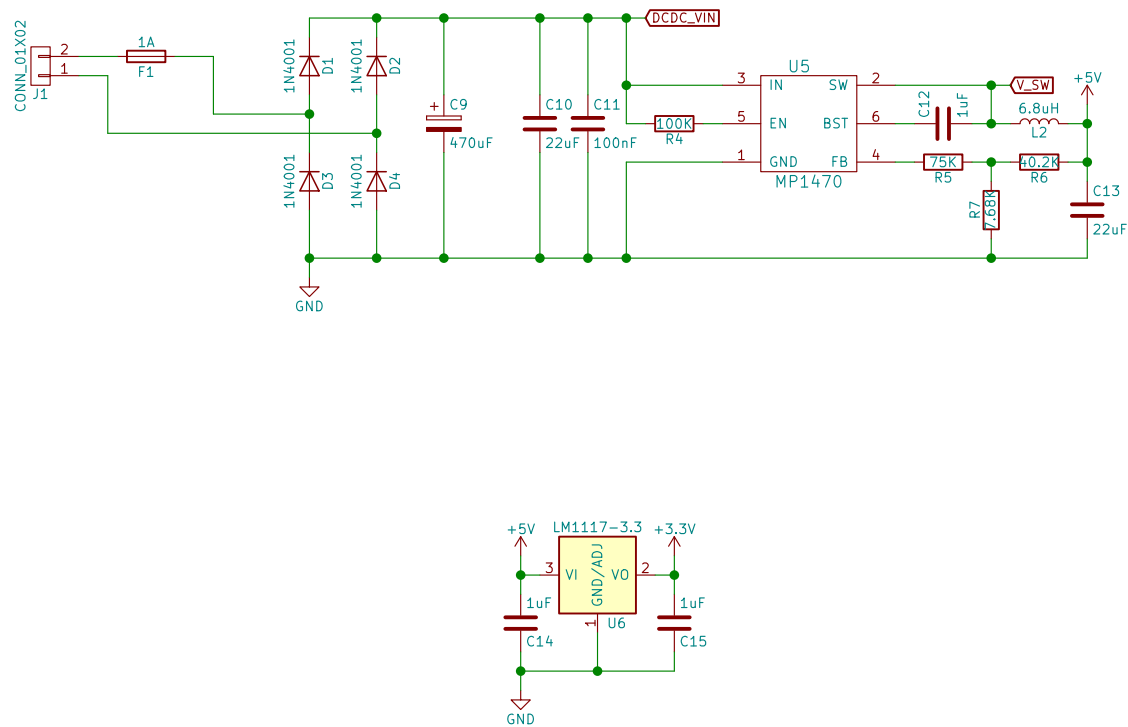
ISP port and debug LEDs.

Sheet: /SheetMCU/
File: MCU.sch

Title: ATmega328P

Size: A4 Date:
KiCad E.D.A. kicad (5.0.0)

Rev:
Id: 2/5

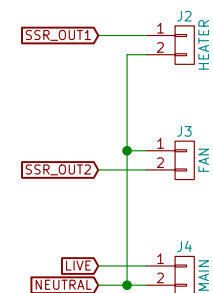
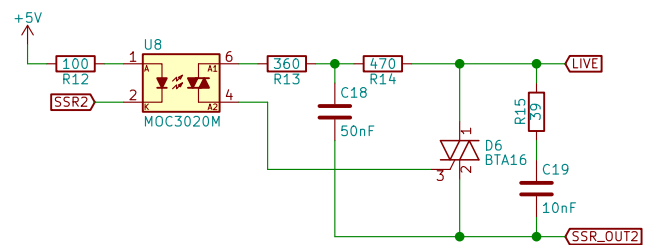


Sheet: /SheetPower/
File: PowerRegulators.sch

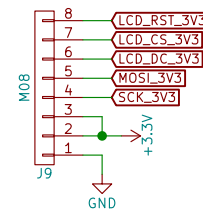
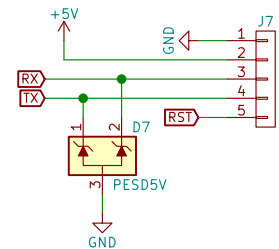
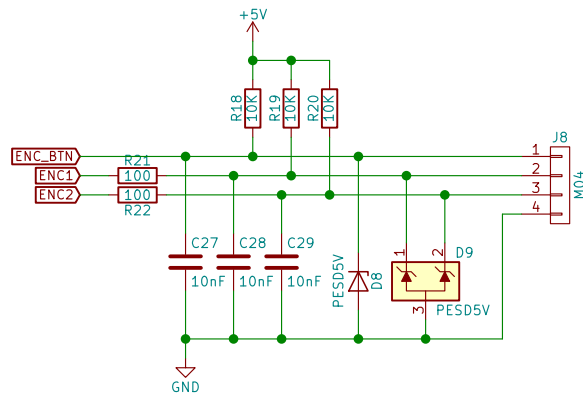
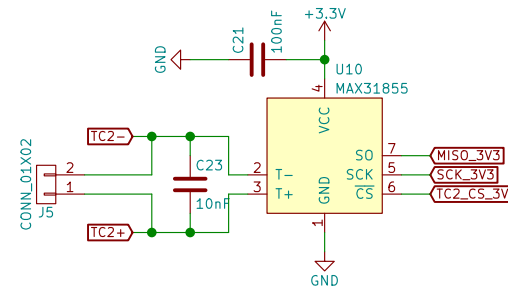
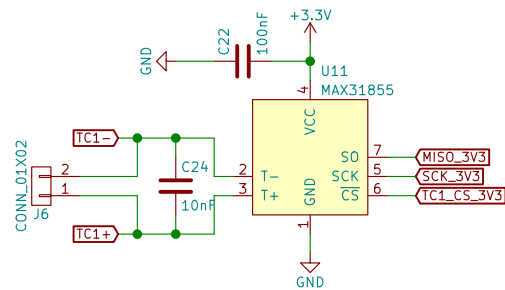
Title: Power Supply

Size: A4
KiCad E.D.A. kicad (5.0.0)

Date:
Rev: Id: 3/5



Rev:
Id: 4/5



Sheet: /SheetThermocouple/
File: Thermocouple.sch

Title: Thermocouples and Connectors

Size: A4
KiCad E.D.A. kicad (5.0.0)

Date:

Rev:
Id: 5/5