

What can Black OpMin GoofyMax offer...

ABCDEFGHIJKLMNOPQRSTUVWXYZ

abcdefghijklmnopqrstuvwxyz

**The exodus of jazzy pigeons is craved
by squeamish walkers.**

...that Black OpMin GoofyMin can't?

ABCDEFGHIJKLMNOPQRSTUVWXYZ

abcdefghijklmnopqrstuvwxyz

**The exodus of jazzy pigeons is craved
by squeamish walkers.**

What can Light OpMin GoofyMax offer...

ABCDEFGHIJKLMNOPQRSTUVWXYZ

abcdefghijklmnopqrstuvwxyz

The exodus of jazzy pigeons is craved
by squeamish walkers.

...that Light OpMin GoofyMin can't?

ABCDEFGHIJKLMNOPQRSTUVWXYZ

abcdefghijklmnopqrstuvwxyz

The exodus of jazzy pigeons is craved
by squeamish walkers.

Decreasing opsz currently causes
GoofyMax bold text to look too large
when used inline with GoofyMin.

This is a **nice** effect!

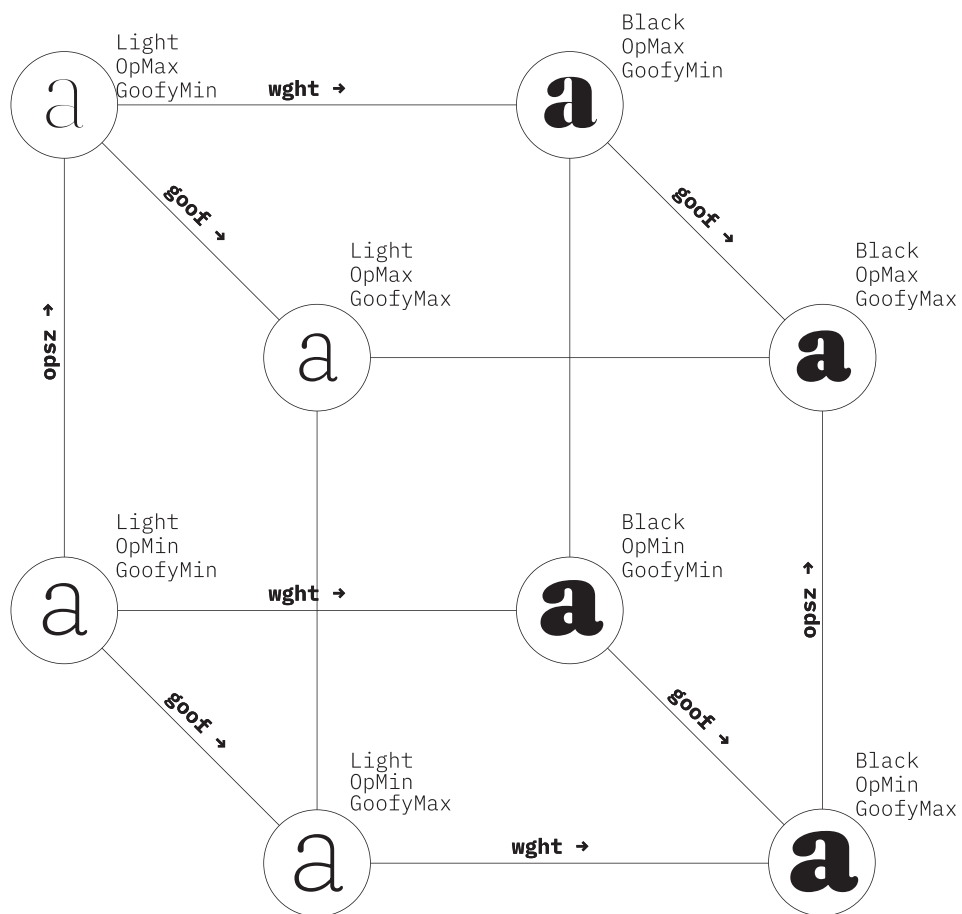
Regular	Bold
opsz 119	opsz 119
goof 0	goof 100
wght 520	wght 1000

This is a **not-so-nice** effect!

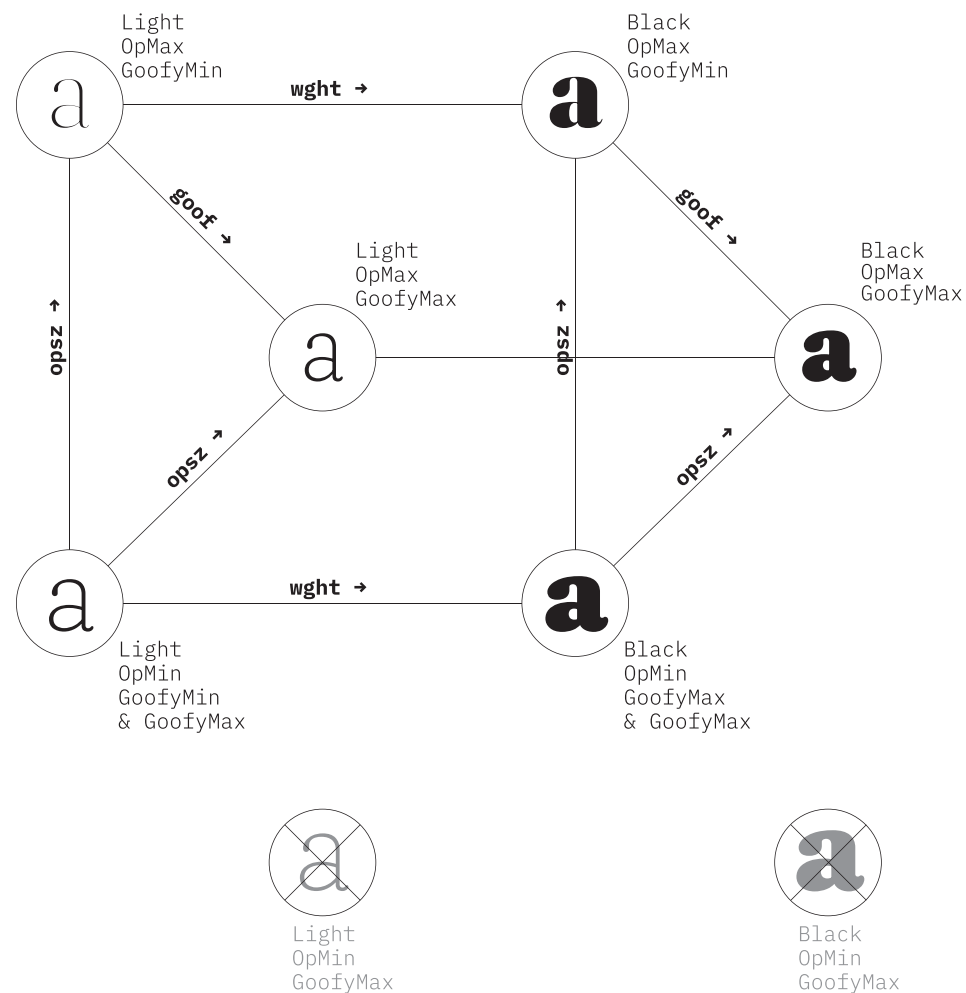
Regular	Bold
opsz 9	opsz 9
goof 0	goof 100
wght 520	wght 1000

Option 1: Remove OpMin GoofyMin masters.

Current Designsapce

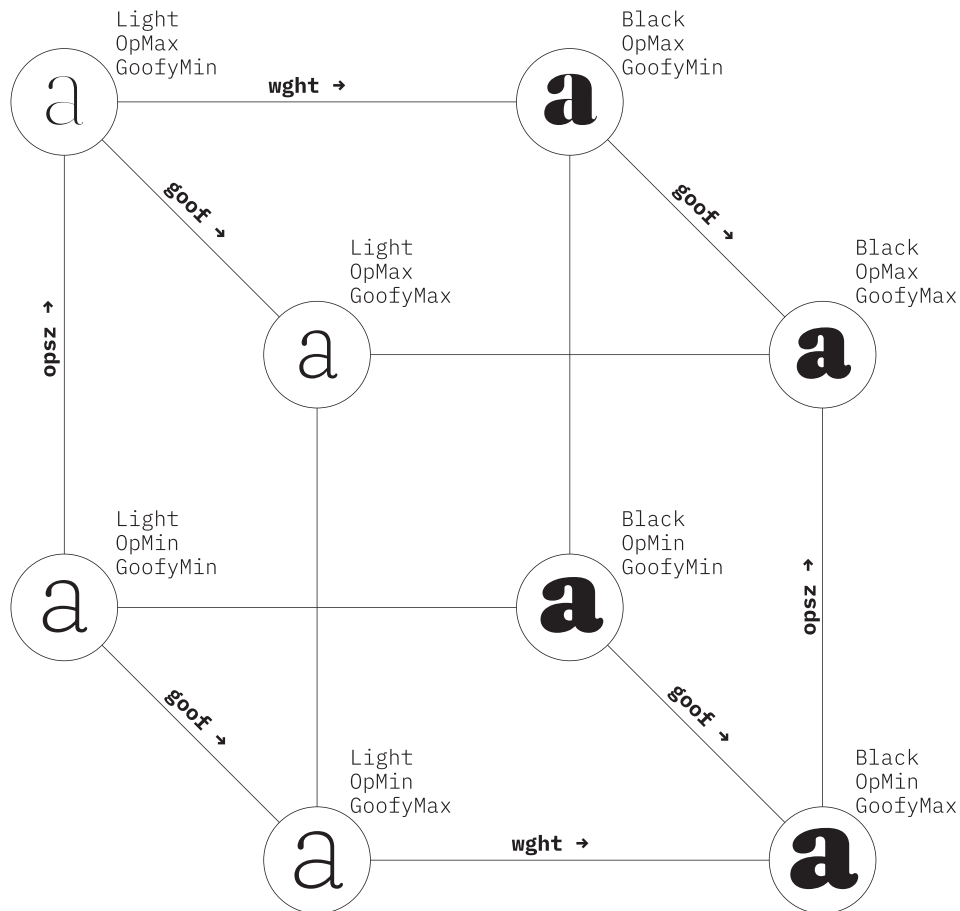


New Designsapce



Option 2: Repurpose OpMin GoofyMin masters as OpMin GoofyMax masters and add new higher contrast OpMin GoofyMin masters.

Current Designscape



New Designscape

