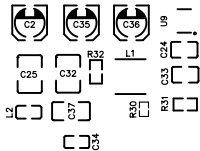


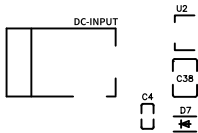


CLASS 5 EMI FILTER

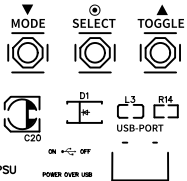


DC-INPUT

GND
VIN



> SCRIPTABLE 32-bit uPSU



ON OFF

POWER OVER USB

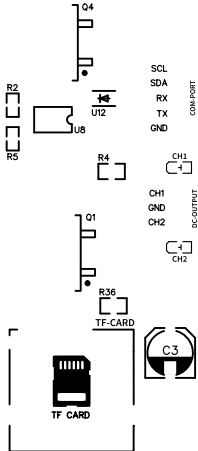


BOARD STATUS



3.3 GHD

BOOT SETUP



SCL
SDA
RX
TX
GND

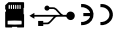
COM-PORT

DC-OUTPUT

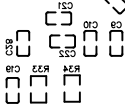
CH1
[+]



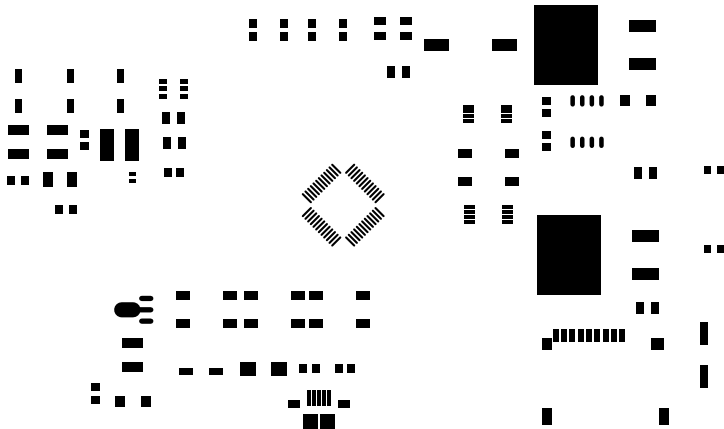
ARDUCORE.COM/POWERHACKER

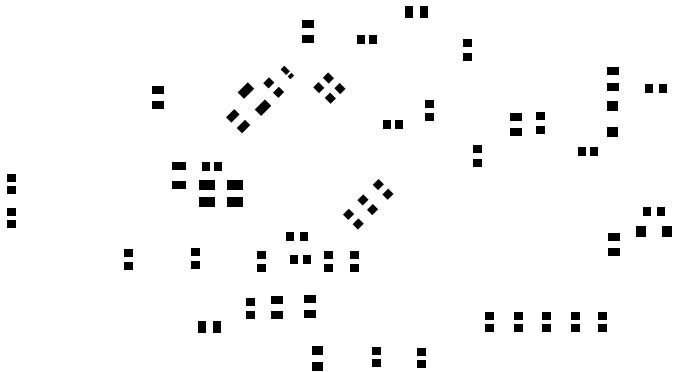


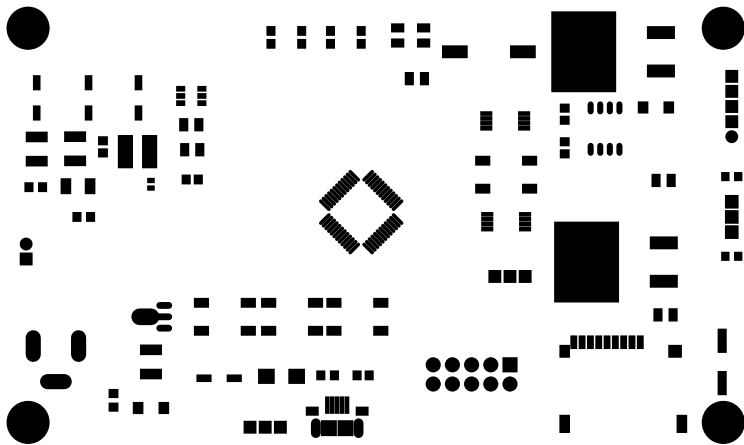
www.arducore.com
Up2U rev0 \ JG4

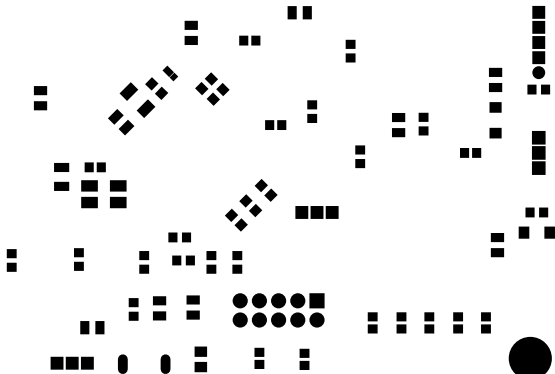


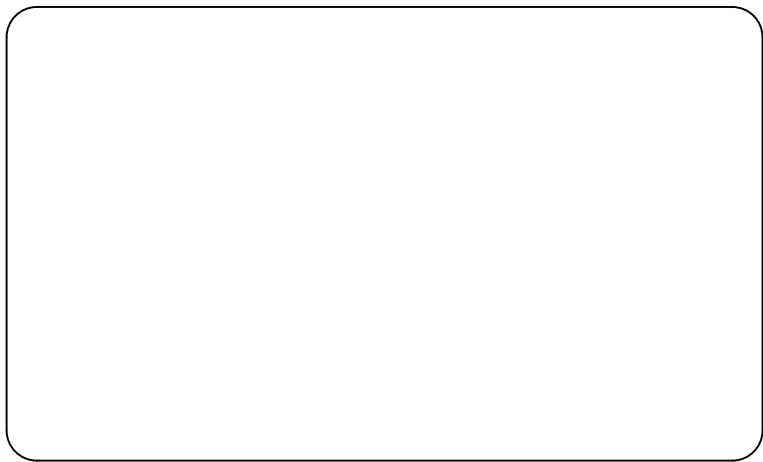
DESIGNED IN SPAIN
DISEÑADO EN ESPAÑA



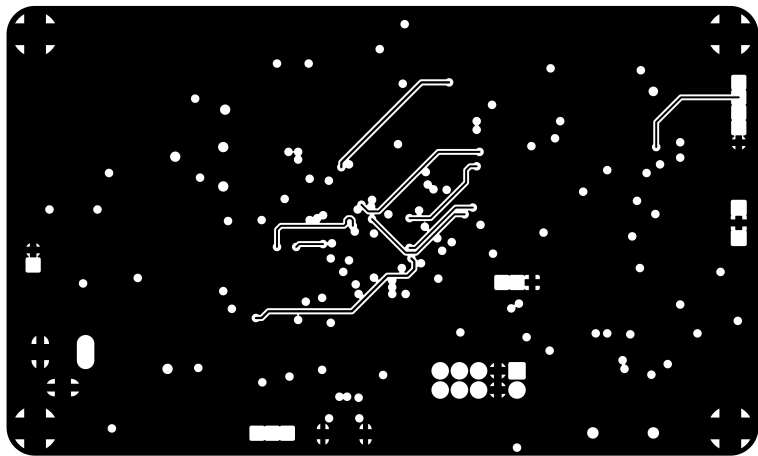


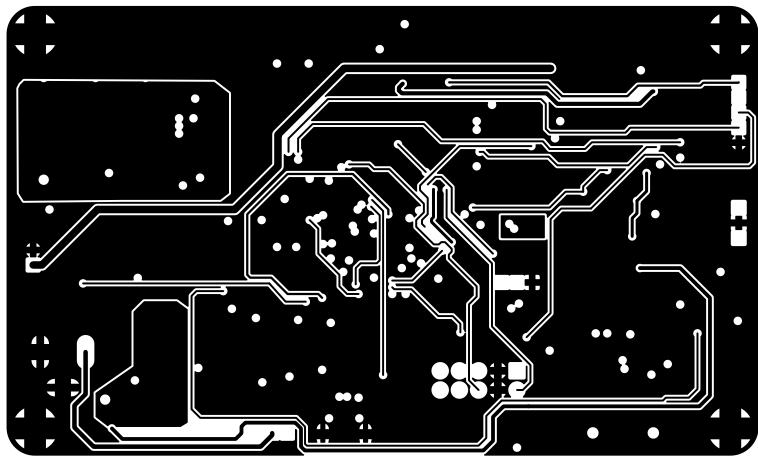












• •

○ ○