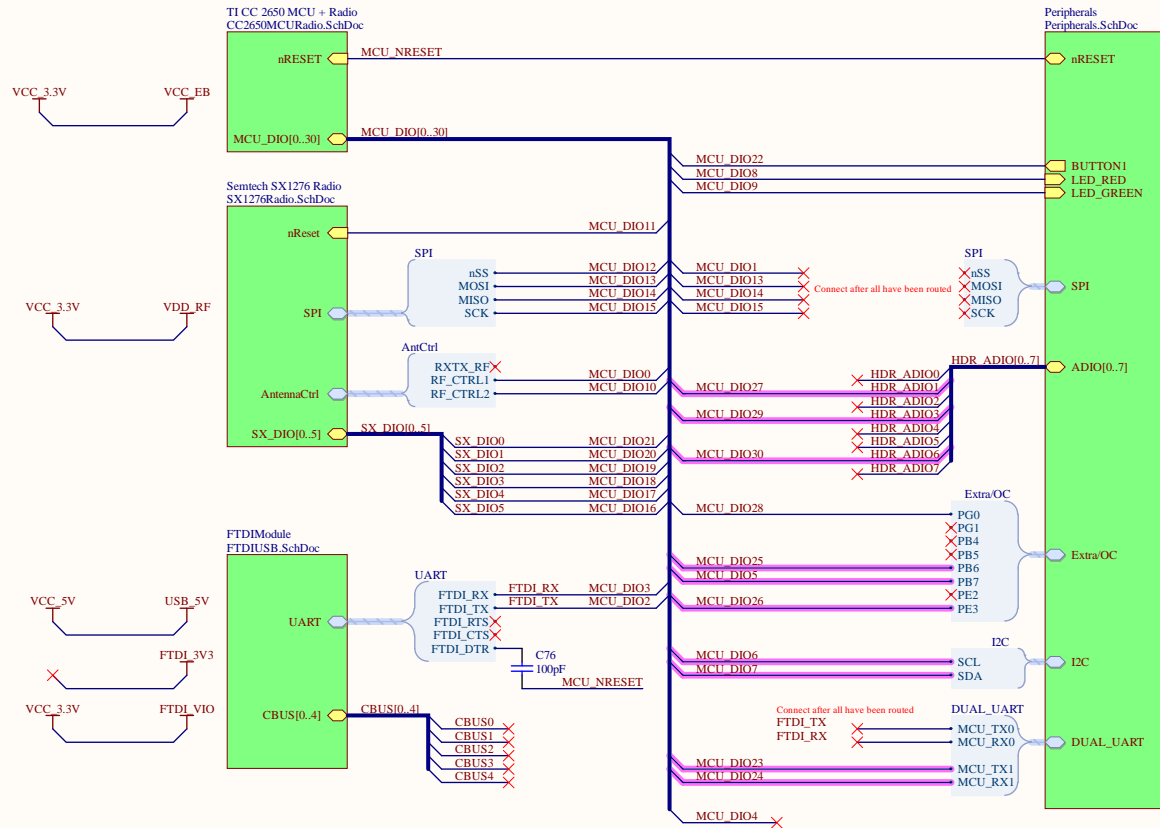
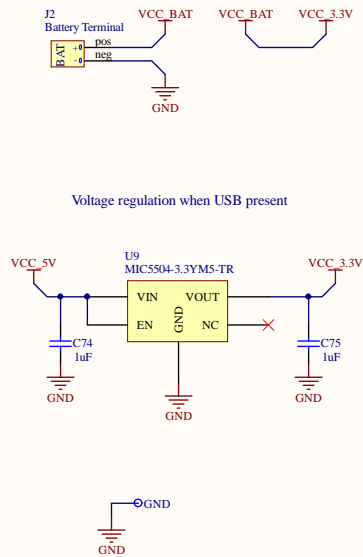
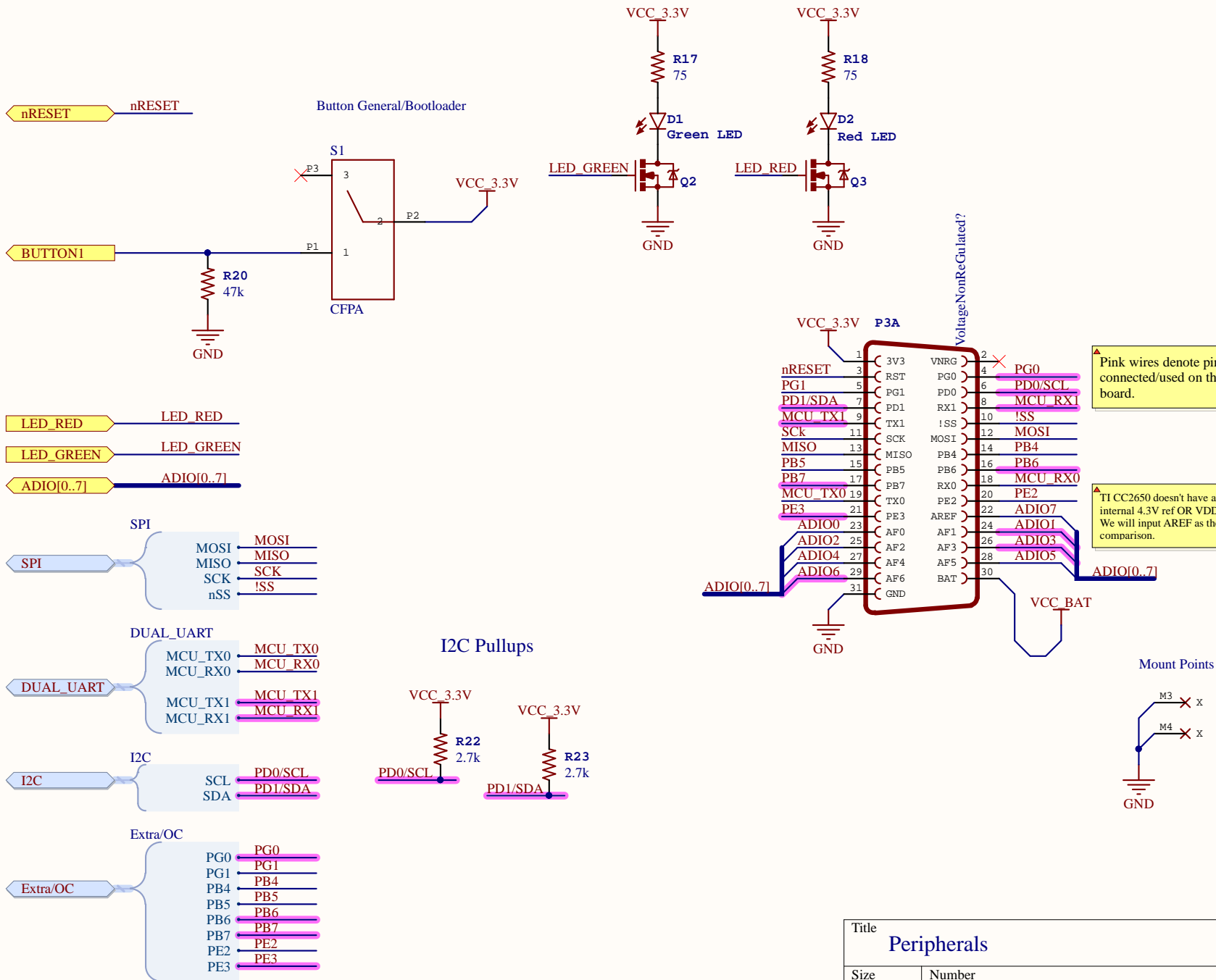


Title		
TI CC2650 Radio and MCU		
Size	Number	Revision
A3		1
Date:	7/15/2016	Sheet of
File:	C:\Users\...CC2650MCURadio.SchDoc	Drawn By: Craig Hesling



Use DIO0 as bootloader backdoor pin if I can't get FTDI to enter bootloader

Title LoRaBug Main		
Size A3	Number	Revision 1
Date: 7/15/2016	Sheet of	
File: C:\Users\Main\SchDoc	Drawn By: Craig Hesling	

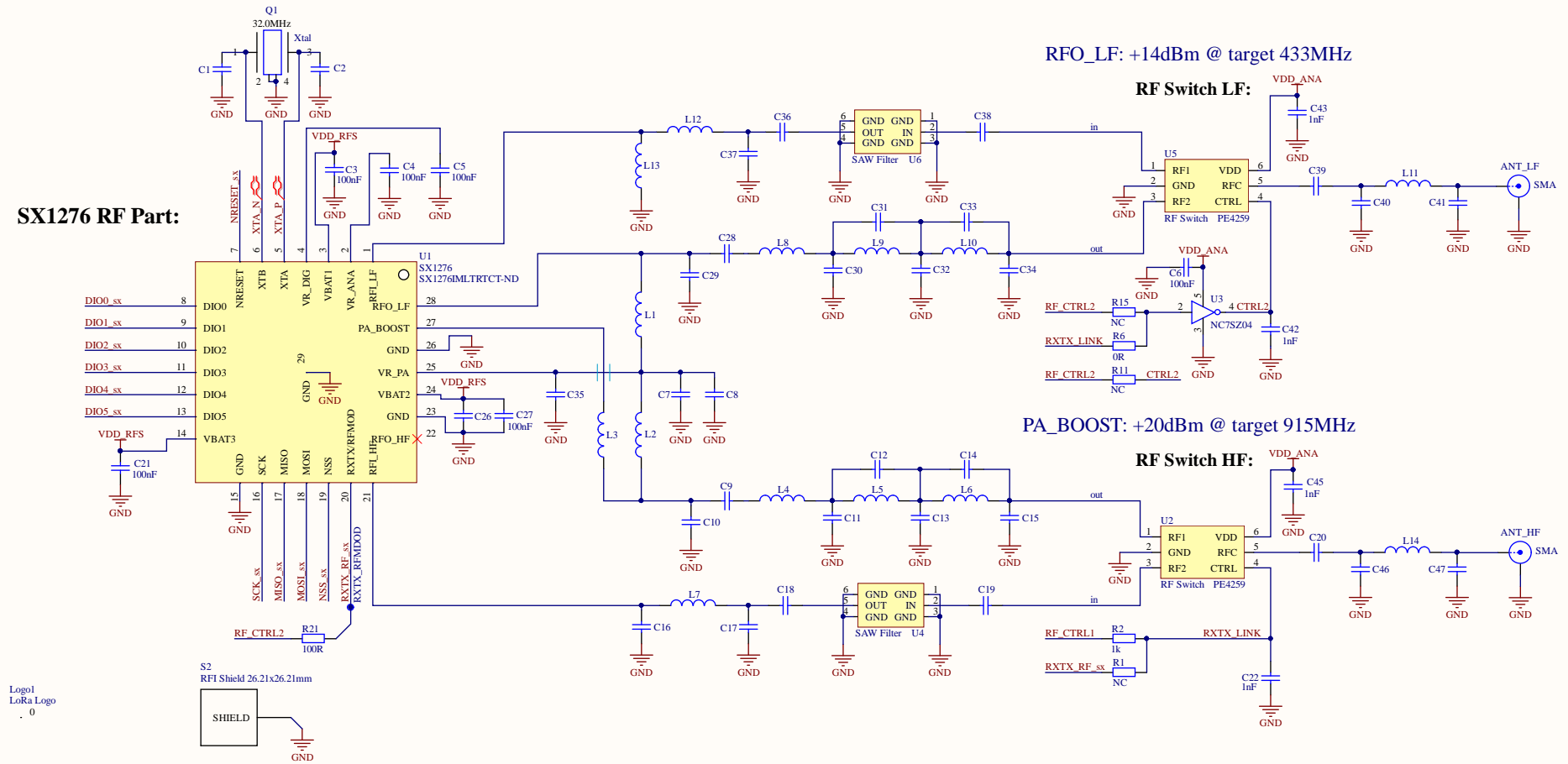


Pink wires denote pins that are connected/used on the environment sensor board.

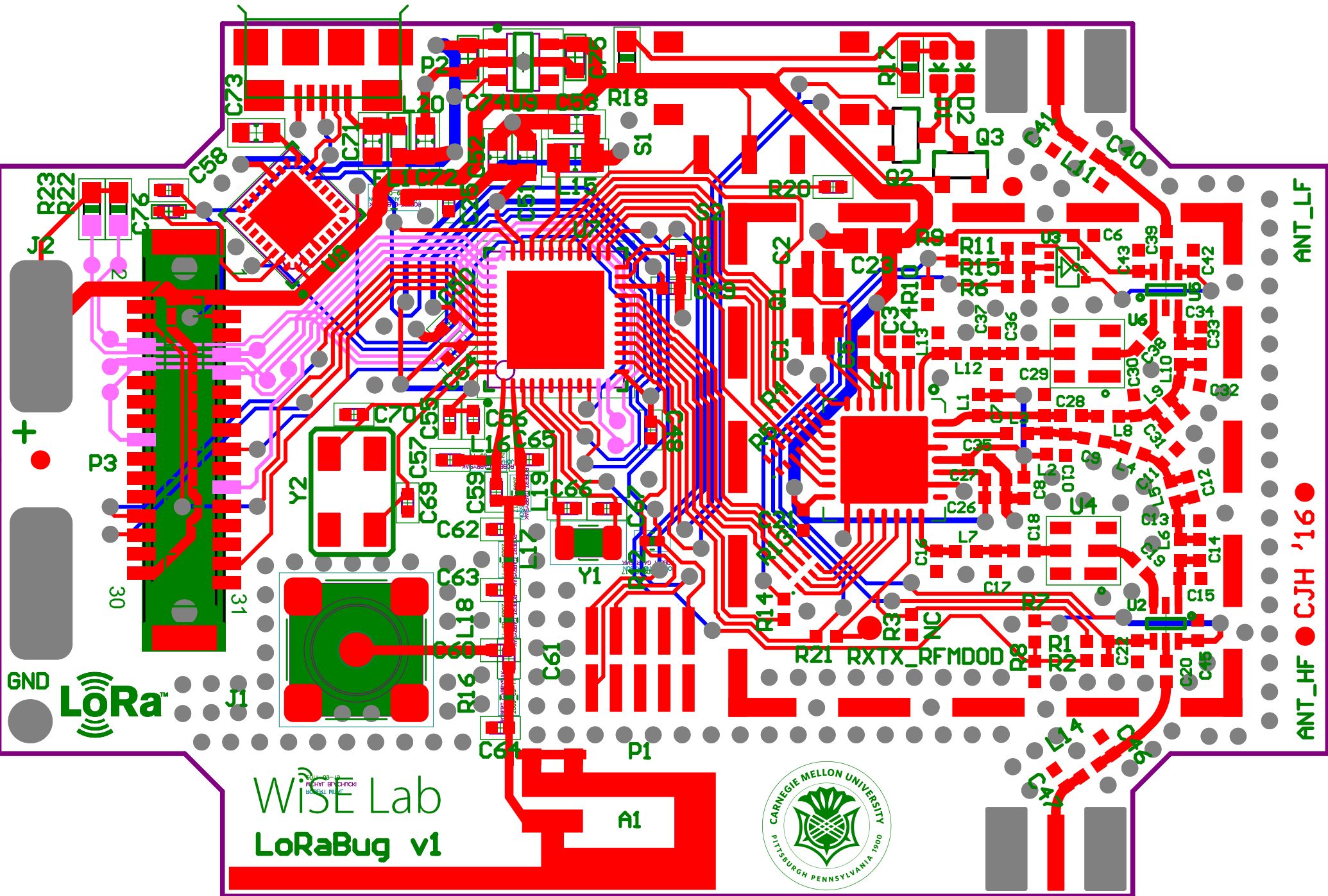
TI CC2650 doesn't have a dedicated AREF. It uses an internal 4.3V ref OR VDD5. We will input AREF as the last Analog pin for internal comparison.

Title Peripherals		
Size A	Number	Revision 1
Date:	7/15/2016	Sheet of
File:	C:\Users\...\Peripherals.SchDoc	Drawn By: Craig Hesling

SX1276 RF Part:



Title		
Semtech SX1276 Radio		
Size	Number	Revision
A3		1
Date:	7/15/2016	Sheet of
File:	C:\Users\...SX1276Radio.SchDoc	Drawn By: Craig Heeling



LoRa
LoRaBug v1



ANT_HF ● CJH '16 ● ANT_LF