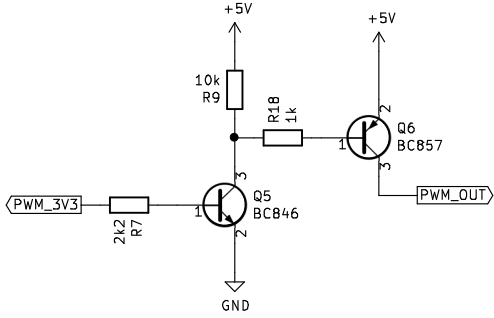
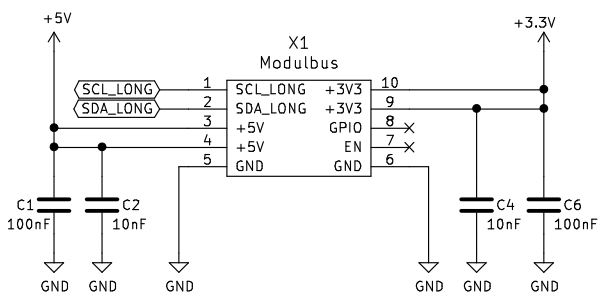
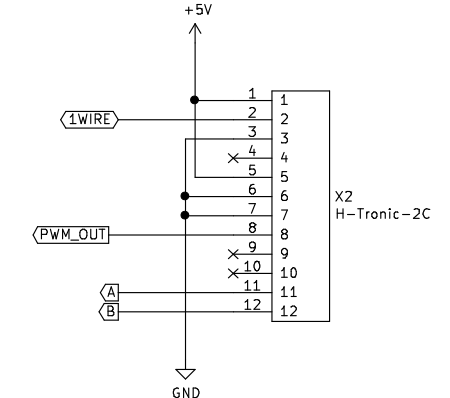
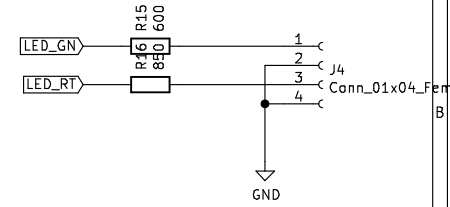
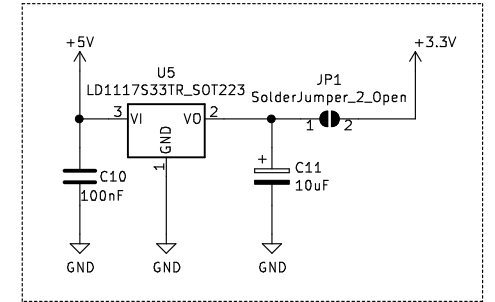
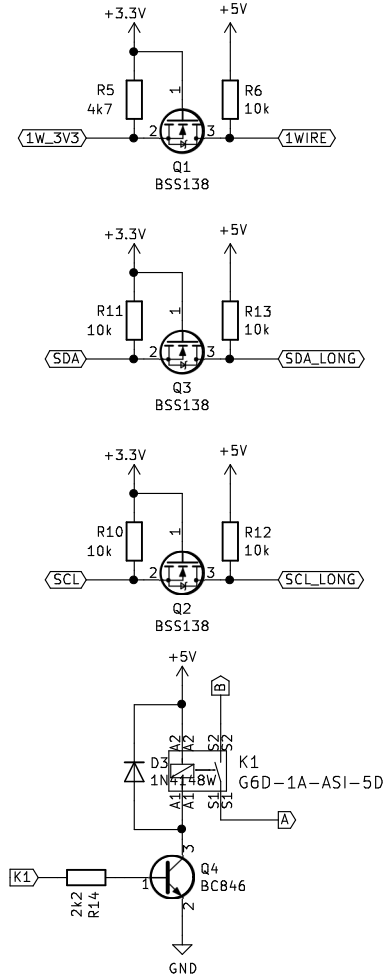
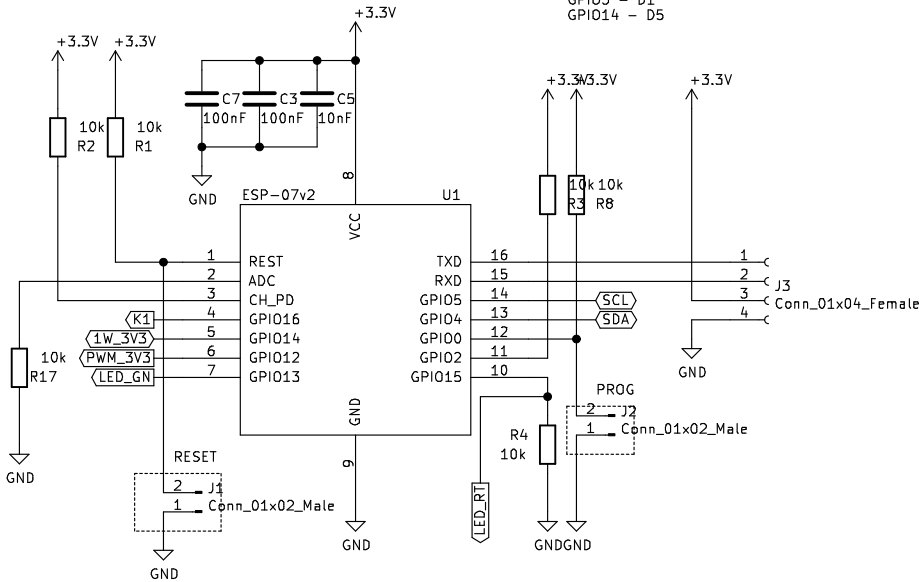


Zum Programmieren:
 PROG schließen und geschlossen halten
 dann RESET kurz schließen
 nach dem Programmieren, PROG öffnen,
 RESET kurz schließen

GPI00 - D3
 GPI02 - D4
 GPI04 - D2
 GPI05 - D1
 GPI014 - D5



Sheet: /	
File: WifiGateway.sch	
Title:	
Size: A4	Date:
KiCad E.D.A. kicad 5.1.5+dfsg1-2build2	
Rev:	
Id: 1/1	