

## Table of Contents

|   |           |
|---|-----------|
| <b><i>File Panel</i></b> .....            | <b>2</b>  |
| Browse Drives, Files and Folders.....     | 2         |
| Selecting files to open.....              | 2         |
| Opening Files .....                       | 3         |
| Change File Pattern .....                 | 3         |
| Managing Files and Folders .....          | 3         |
| <b>File Manager Panel</b> .....           | <b>4</b>  |
| Clear UnUsed Documents.....               | 4         |
| <b>JavaScript Help Panel</b> .....        | <b>5</b>  |
| <b>Markup Help Panel</b> .....            | <b>7</b>  |
| <b>XHTML Help Panel</b> .....             | <b>10</b> |
| <b>DHTML Help Panel</b> .....             | <b>11</b> |
| <b>CSS Help Panel</b> .....               | <b>12</b> |
| <b>Function Explorer Help Panel</b> ..... | <b>13</b> |
| Icon Information .....                    | 13        |
| <b>Adding a JavaScript Function</b> ..... | <b>14</b> |
| Saving Functions to Text/Html File.....   | 14        |
| <b>Code Explorer Help Panel</b> .....     | <b>15</b> |
| Icon Information .....                    | 15        |
| Configure file extensions .....           | 15        |
| <b>Active Library Help Panel</b> .....    | <b>17</b> |
| Icon Information .....                    | 17        |
| Opening Code from Library .....           | 17        |
| <b>Online Help Panel</b> .....            | <b>19</b> |
| <b>Color Picker Help Panel</b> .....      | <b>20</b> |
| <b>Clipboard Help Panel</b> .....         | <b>21</b> |

## File Panel

The **File Panel** offers help to **navigate** , **browse** files and folders.

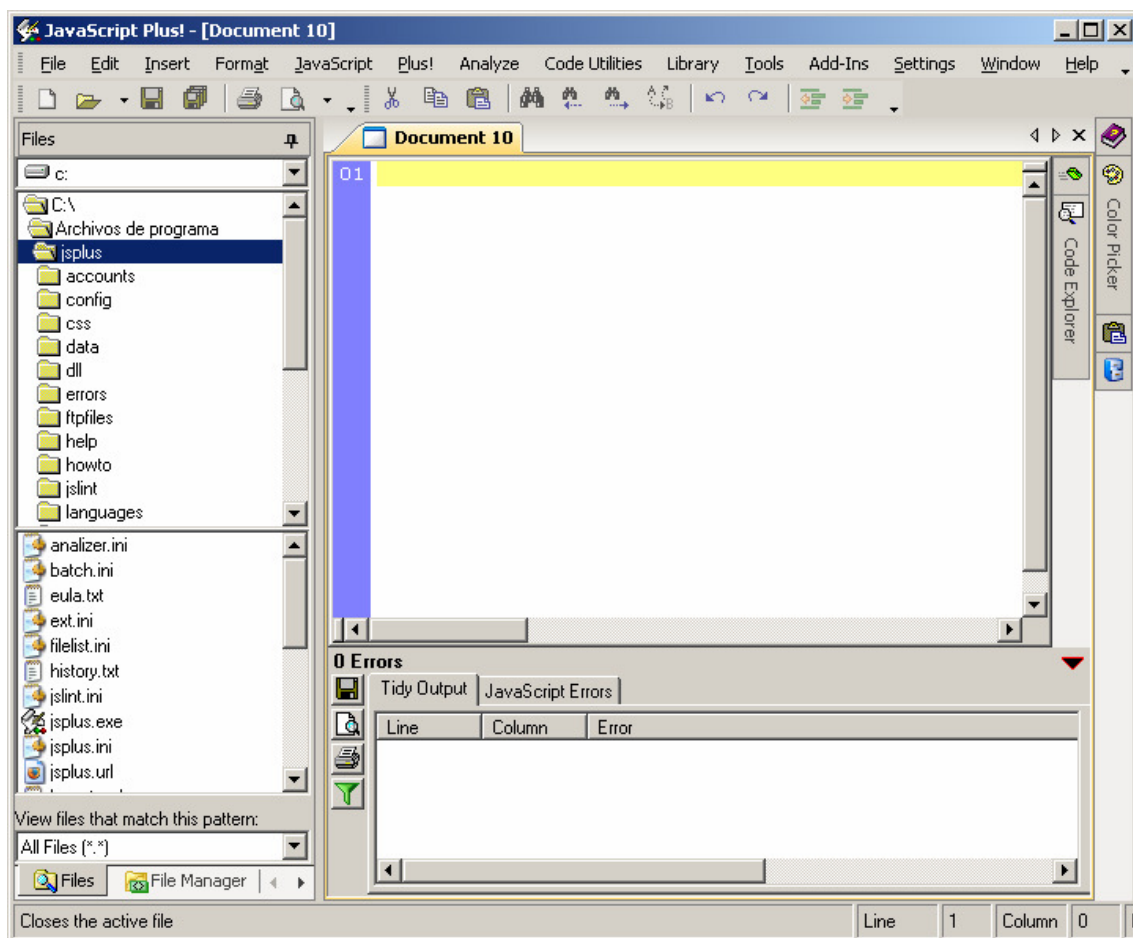
### Browse Drives, Files and Folders

To change current drive clic on the drive combobox. This action will refresh the contents from the folders listbox and the file listbox.

To change current folder double clic on folder. This action will refresh the file listbox.

### Selecting files to open

To select a single file **clíc** on the file.



## Opening Files

To open a single file **double clic** on selected file.

To open selected files **clic right button mouse** and select **open** option from menu.

## Change File Pattern

To change the file pattern displayed on the file listbox select an option to filter. This action will refresh the file listbox contents.

## Managing Files and Folders

The file panel also offers options to create folders, delete files and view folder and file properties.

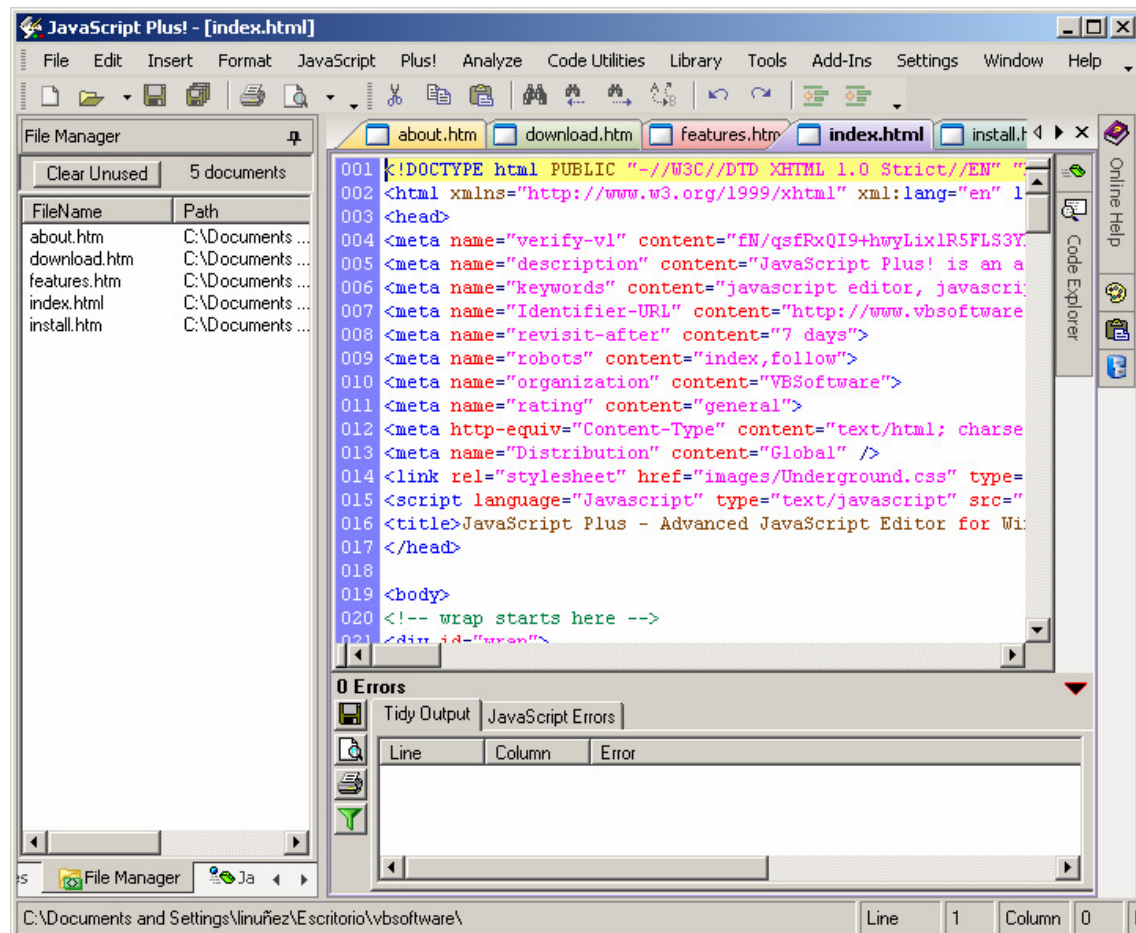
To create a folder double clic on the folder listbox. Input the new folder to create and press enter. This action will creates the folder into the current folder selection and will refresh the folder listbox.

To delete files select the files to delete and press the right button mouse. Then select the delete option from menu. An alert message box will be displayed and then clic on the Yes button to delete the selected files.

## File Manager Panel

The **File Manager Panel** allow to you navigate all active opened documents.

To select/open a document clic on file to **open/activate**.

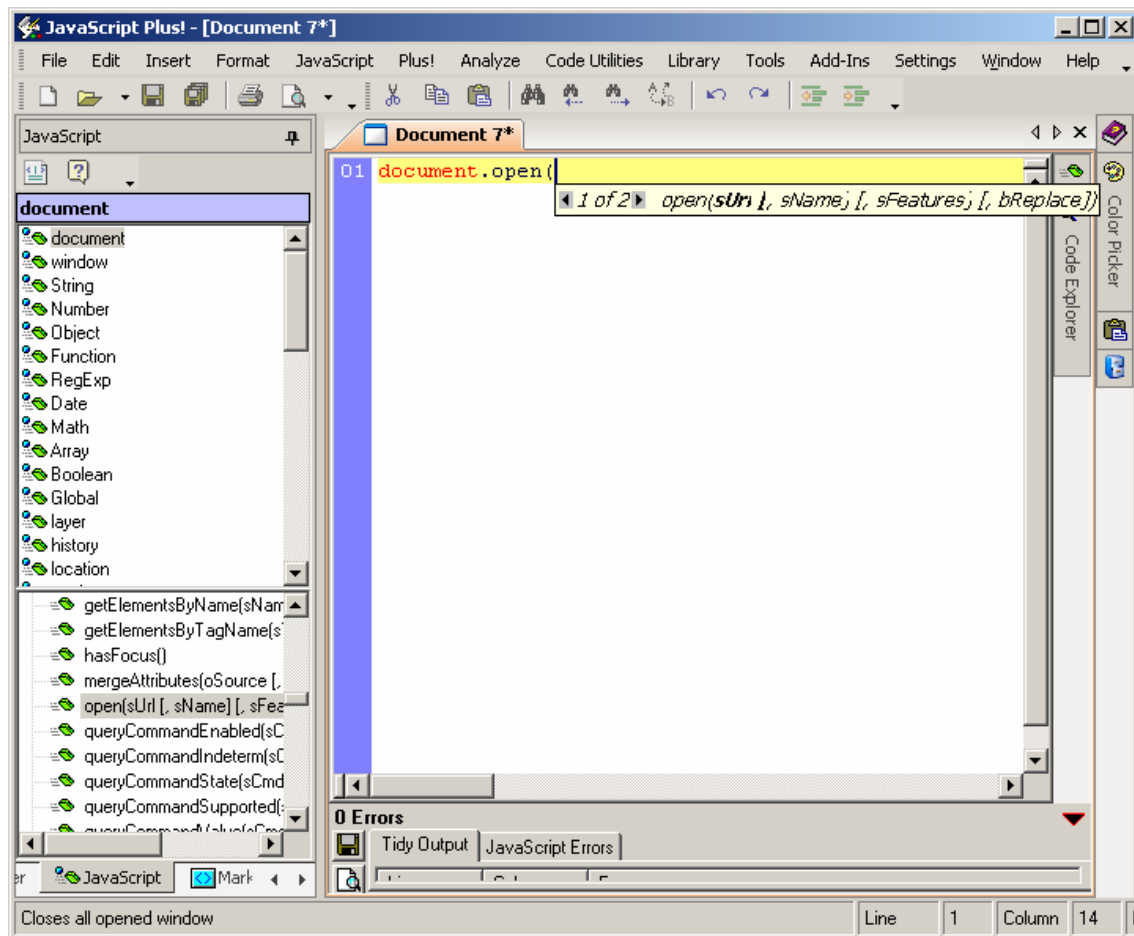


## Clear UnUsed Documents

This option will clear all **unused** documents from the **File Manager Panel**. This option **"close"** all unopened documents.

## JavaScript Help Panel

The **JavaScript Help Panel** gives information about all **objects**, **methods**, **events**, **constants**, **collection** and **properties** of javascript language.

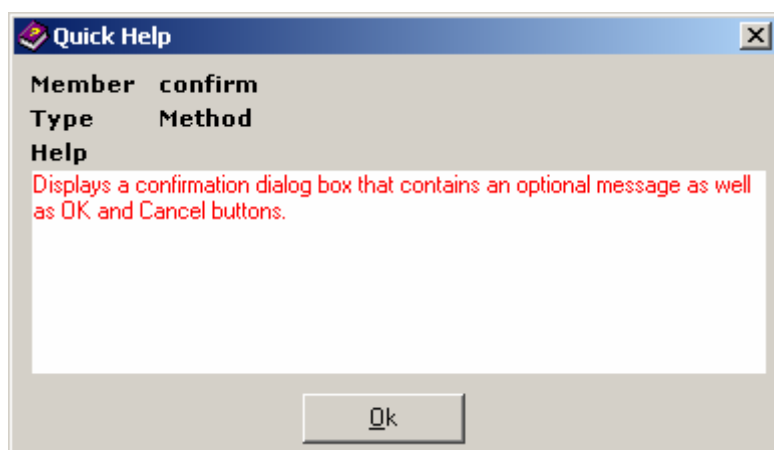


The first icon above the panel inserts the selected item to the active window editor. The second icon will display help about the selected item.

The first listbox contains all objects related to javascript language. If you clic to javascript object this will load all information related about the selected item. This information will be displayed in the listbox below.

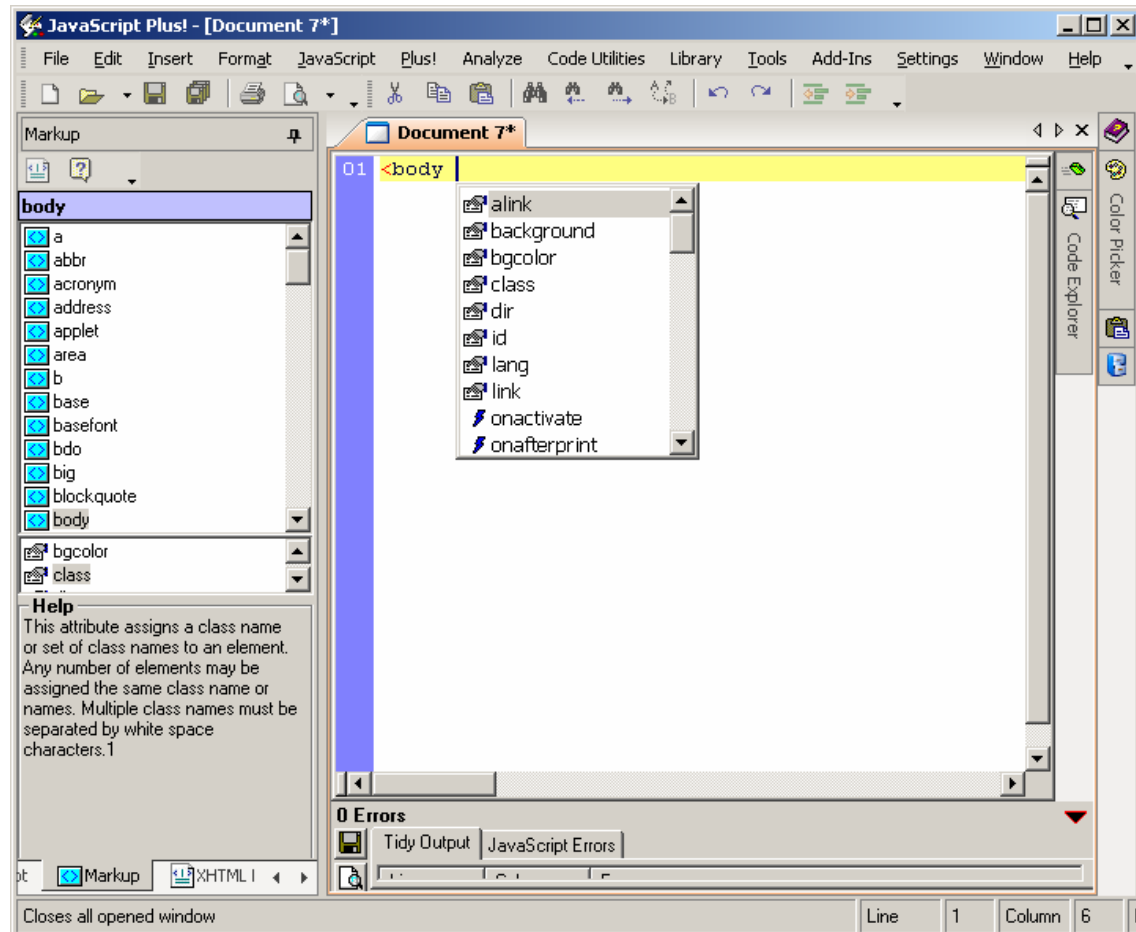
To insert an item to the current active window editor double clic or clic on the first icon.

To get help about the selected item clic on the second icon. This action will display the next window.



## Markup Help Panel

The **Markup Help Panel** gives information about all html tags and events related to **HTML language**.

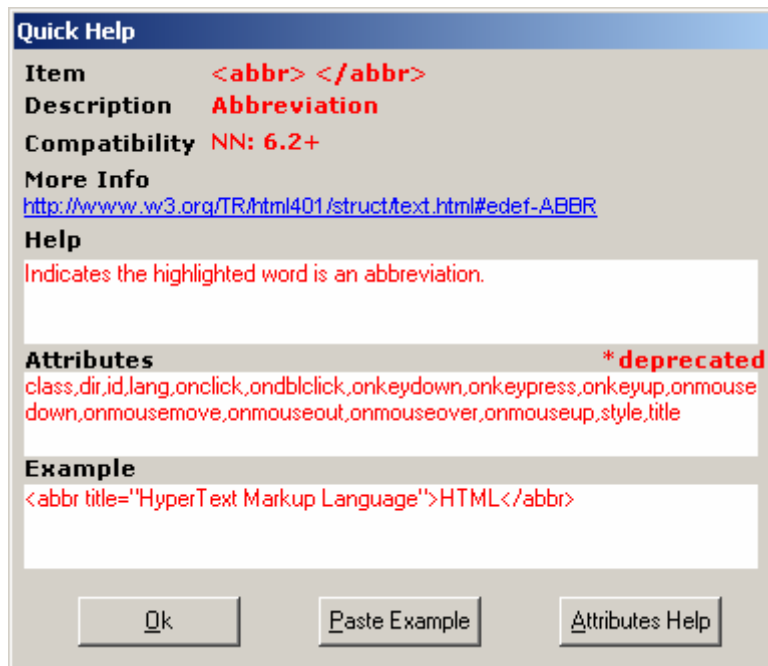


The **first icon** above the panel **inserts** the selected item to the active window editor. The **second icon** will display **help** about the selected item.

The first listbox contains all objects related to **HTML language**. If you clic a HTML tag this will load all information related about the selected item. This information will be displayed in the listbox below.

To insert an item to the current active window editor **double clic** or clic on **the first icon**.

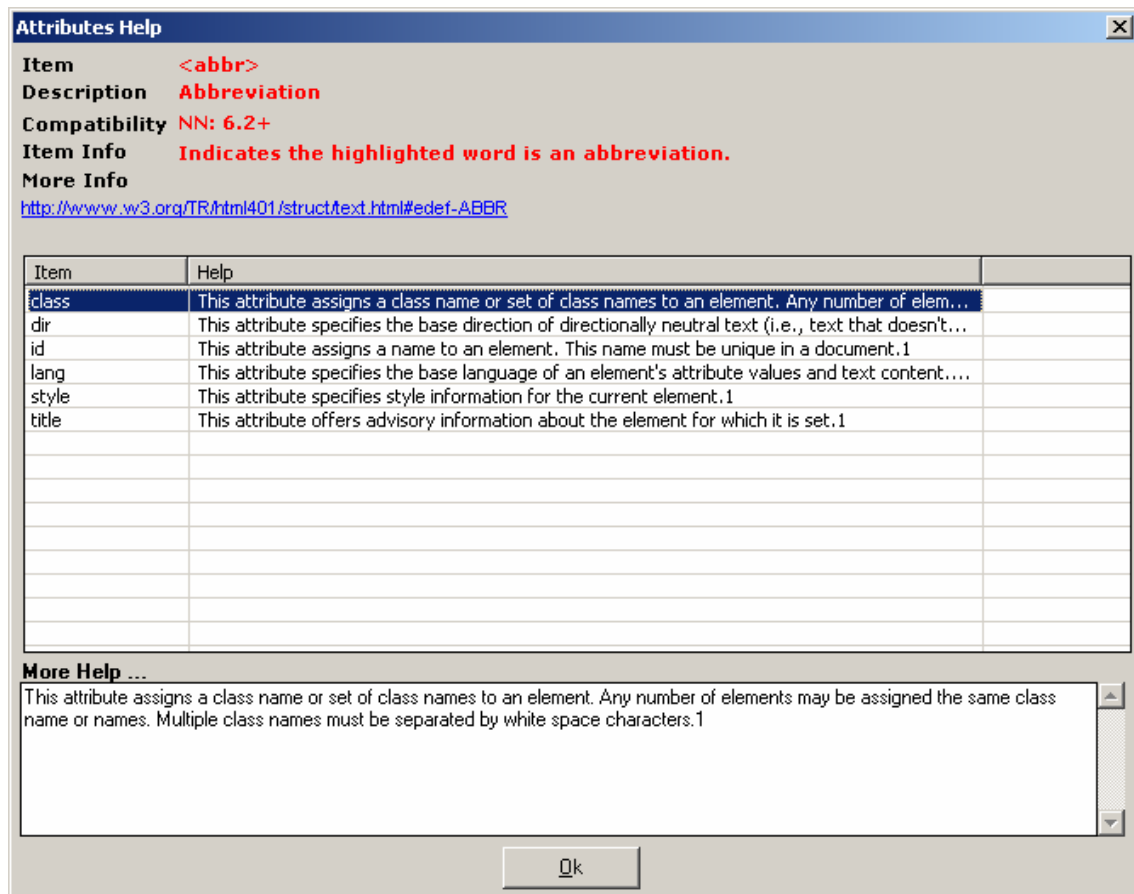
To get help about the selected item clic on the **second icon**. This action will display the next window.



To close this window dialog clic on **Ok** button.

To paste the example to the active window editor clic on **Paste Example** button.

To view the attributes related to the HTML tag clic on **Attributes Help** button. This will display the next window dialog :





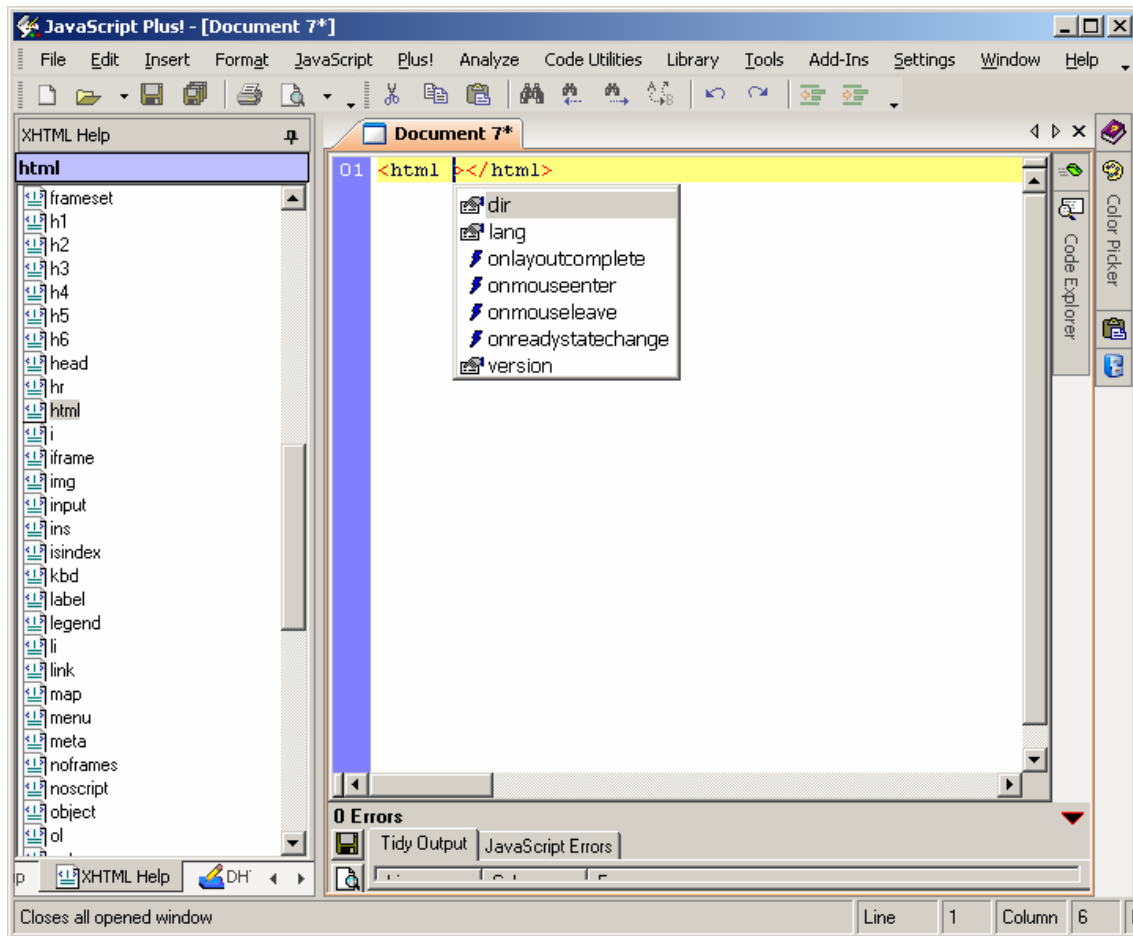
## JavaScript Plus! – Help Panels Reference

To get help about the HTML attribute clic on item. This will be displayed on the textbox below.

To get more information about the selected tag clic on the link.

## XHTML Help Panel

The **XHTML Help Panel** gives information related about the XML Tags.



To **insert** an item into the current active window editor **double clic**.

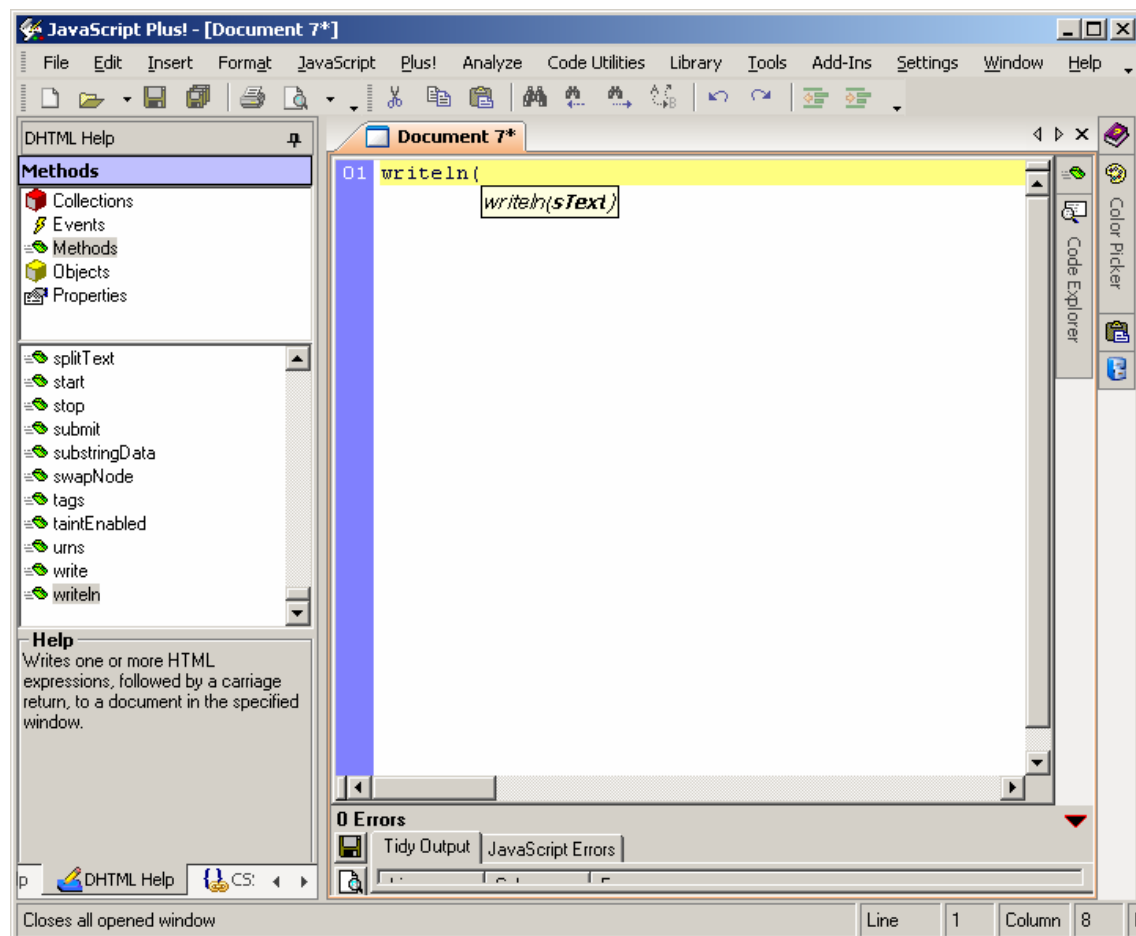
## DHTML Help Panel

The **DHTML Help Panel** gives information about **Dynamic HTML**. DHTML stands for **D**ynamic **H**TML. DHTML is NOT a language or a web standard.

DHTML is a TERM used to describe the technologies used to make web pages dynamic and interactive. To most people DHTML means the combination of **HTML, JavaScript, DOM, and CSS**.

### According to the World Wide Web Consortium (W3C):

"Dynamic HTML is a term used by some vendors to describe the combination of HTML, style sheets and scripts that allows documents to be animated."



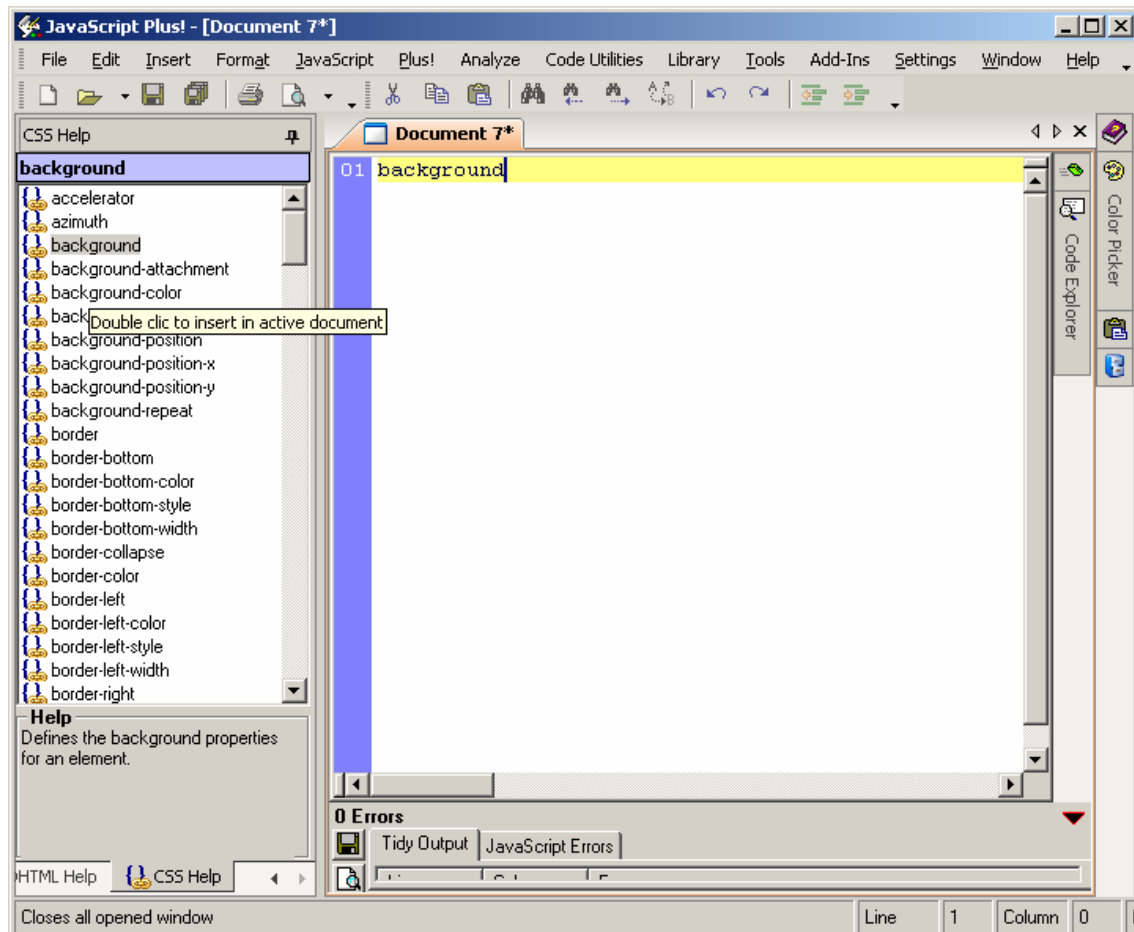
To insert an item into the current active window editor **double clic**.

## CSS Help Panel

The **CSS Help Panel** gives information about css. CSS is the W3C standard style and layout model for HTML.

CSS allows web developers to control the style and layout of web pages.

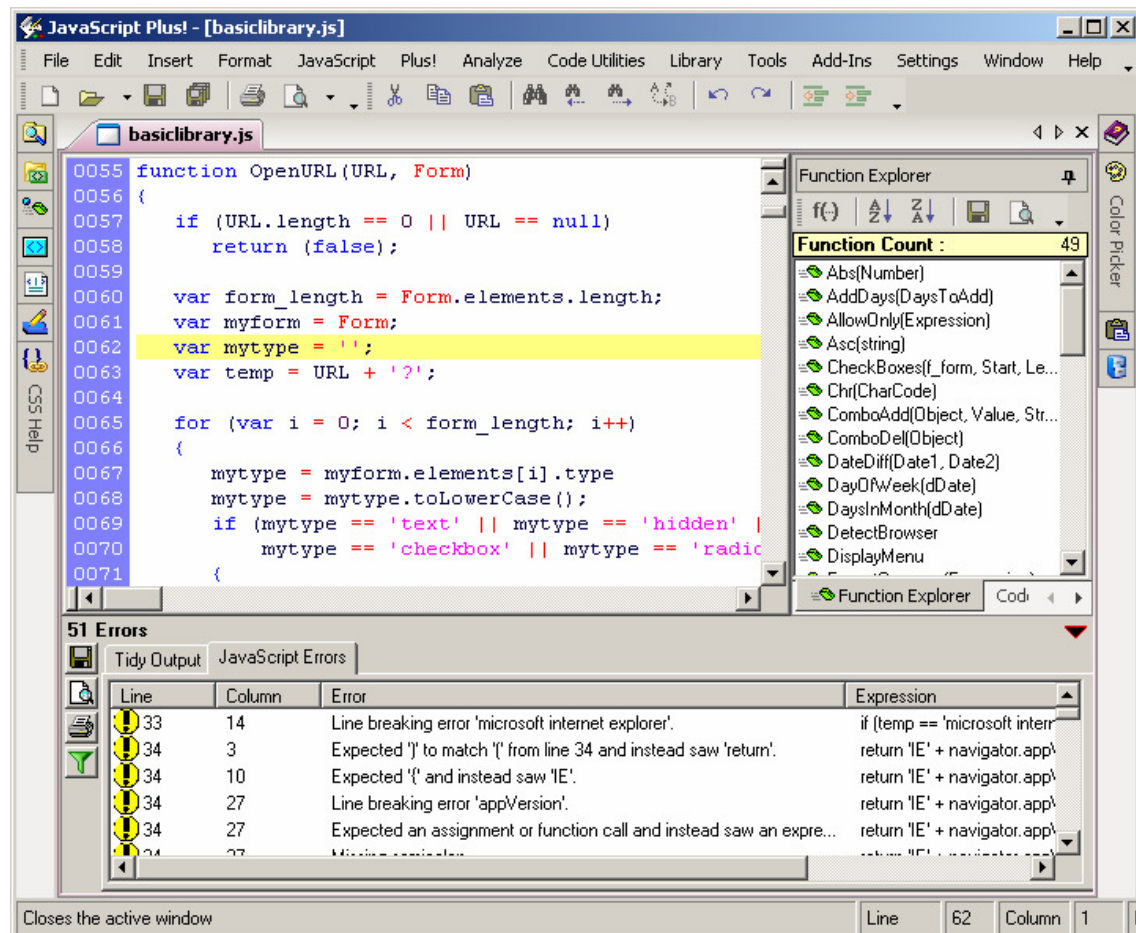
HTML 4 allows dynamic changes to CSS.



To insert an item into the current active window editor **double clic**.

## Function Explorer Help Panel

The **function Explorer Help Panel** gives information about all **javascript functions** into the opened file. The function explorer will display functions from next programming languages : **JavaScript, HTML/XHTML Documents, PHP , ASP & .NET** web pages.

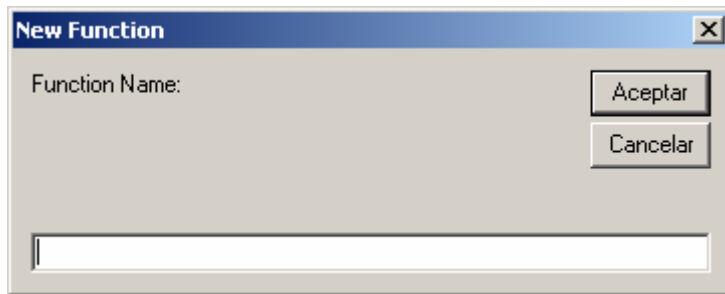


## Icon Information

| Icon | Help   |
|------|--|
|      | Add a new <b>JavaScript Function</b> to the active document. |
|      | Sorts <b>Ascending</b> all functions.                        |
|      | Sorts <b>Descending</b> all functions.                       |
|      | Saves all function names to text file.                       |
|      | Export all functions to html file.                           |

## ***Adding a JavaScript Function***

To add a new javascript function to the active window editor. The next window dialog will be displayed.



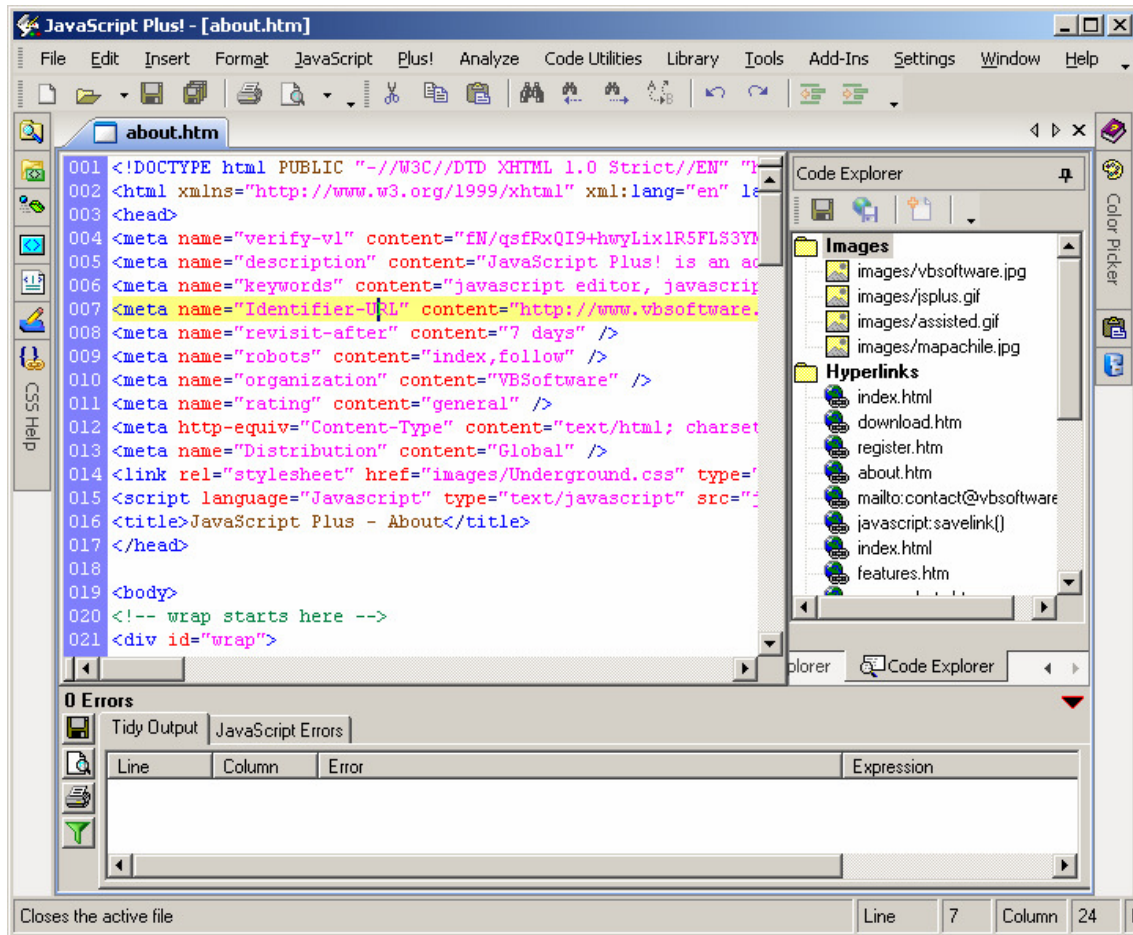
Input the function name and clic on **Ok** button.

## **Saving Functions to Text/Html File**




Clic on the **Save to Text** button or **Save to HTML** button. Input a filename and clic on the **Ok** button.

## Code Explorer Help Panel

The **Code Explorer Help Panel** gives information about **Images, Hyperlinks, Style Sheets and Scripts** defined into the active document.

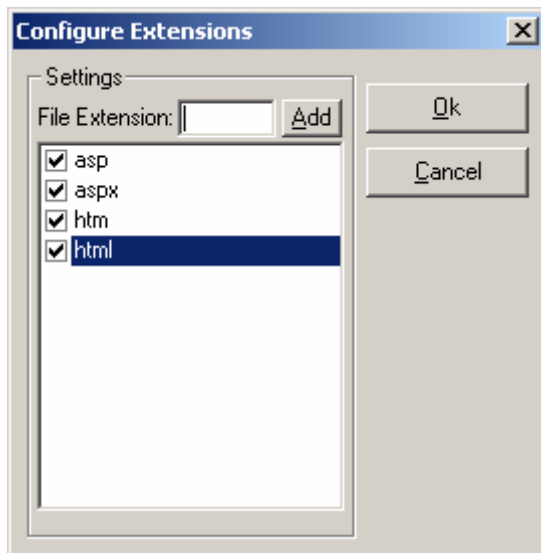


## Icon Information

| Icon  | Help   |
|---|--|
|  | Saves all related information from web page to text file.  |
|  | Download all information from <b>www</b> . Only available if document was opened from <b>"Open from WEB"</b> |
|  | Configures file extensions to be explorer.   |

## Configure file extensions

To add **file extensions** to be analyzed by the **Code Explorer** you can configure from the Configure Extensions Window.



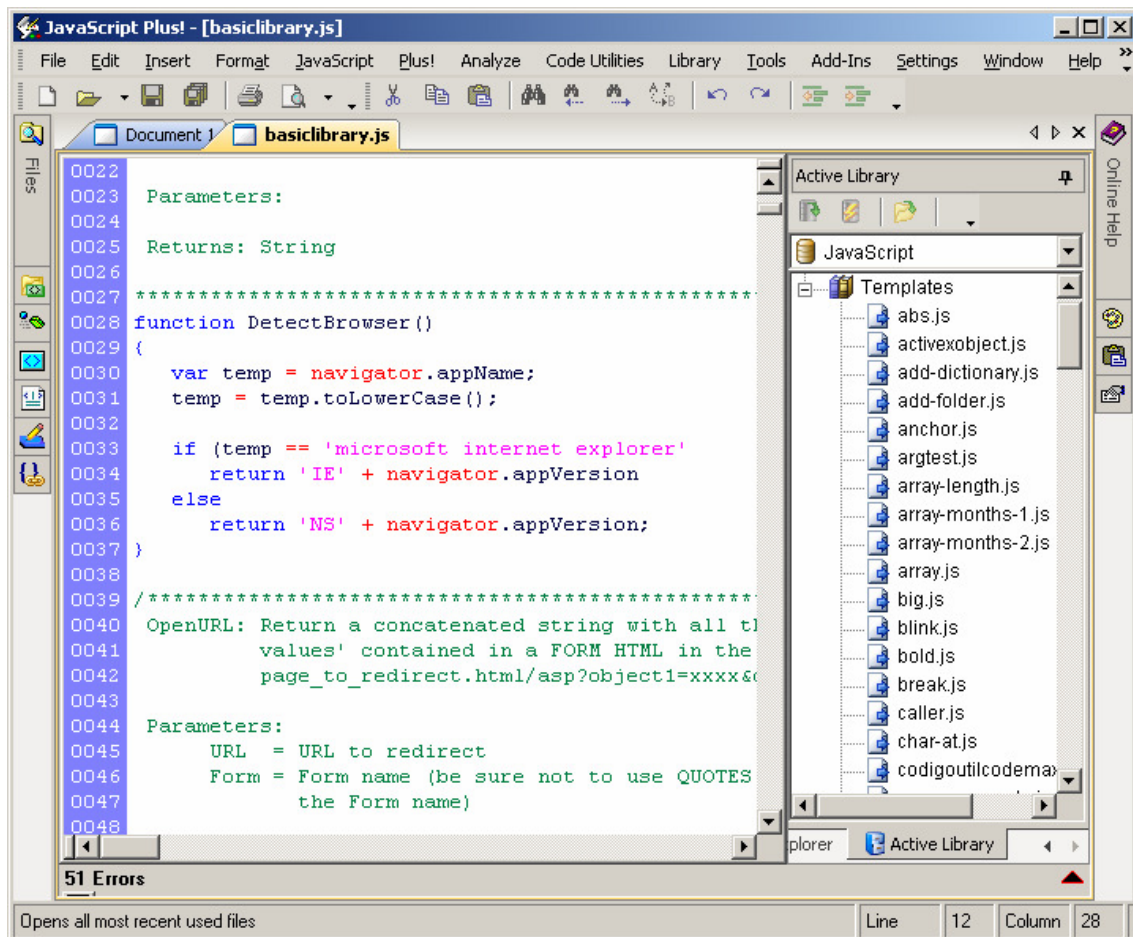
To add a file extension input the extension and clic to **Add button**.

Clic ok to save changes.






## Active Library Help Panel

The **Active Library Help Panel** gives information and help about the “code snippets” defined into the code library. JavaScript Plus! Contains 2 default libraries “pre-installed”. **HTML and JavaScript**.



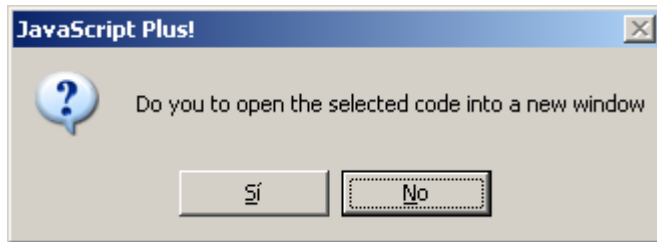
## Icon Information

| Icon  | Help   |
|---|--|
|  | <b>Loads</b> the library.                                |
|  | <b>Refresh</b> the library contents.                     |
|  | <b>Opens</b> the selected item into a new window editor. |

## Opening Code from Library

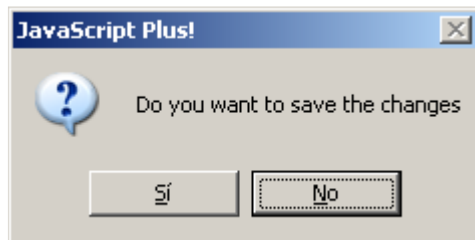
To open code from the **Active Library** follow the next steps :

- **Load** the library.
- **Pick** a category from combobox.
- **Select an item** and double clic. The next window dialog will be displayed :



If you select **"Yes"** a new window will open into the IDE.

If you select "No" the current active window editor will be replaced with the code from the library. If you have make changes to the active window editor the next message will be displayed :

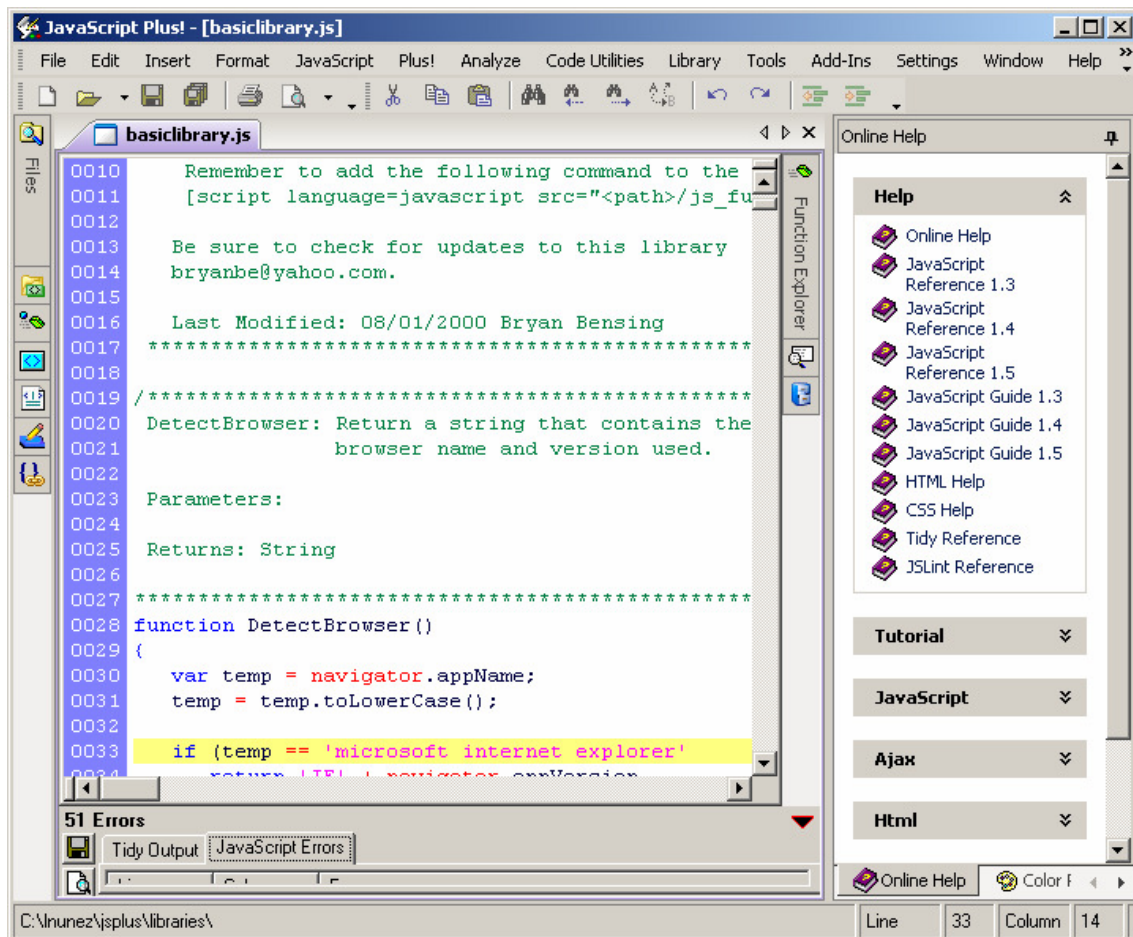


Select **"Yes"** to save changes.

Select **"No"** to don't save changes.

## Online Help Panel

The **Online Help Panel** gives quick access and reference to **JavaScript, Ajax, HTML, XML, JavaScript Tutorial and Programming resources**.

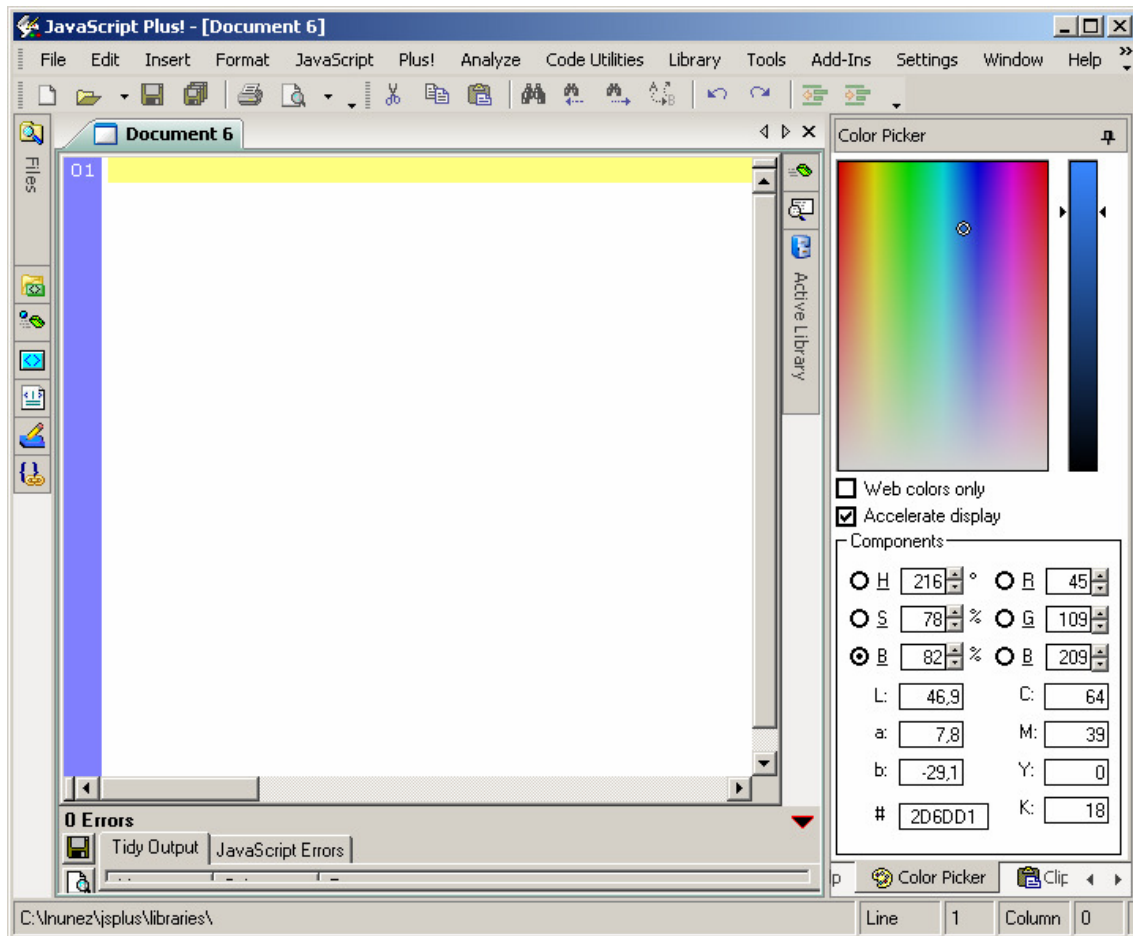


The **Online Help Panel** offers help to the next items :

| Item               | Description                                    |
|--------------------|--|
| <b>Help</b>        | Help for JavaScript, HTML, CSS, Tidy & JSLint. |
| <b>Tutorial</b>    | JavaScript Tutorial.                           |
| <b>JavaScript</b>  | JavaScript Resources.                          |
| <b>Ajax</b>        | Ajax Resources.                                |
| <b>Html</b>        | HTML Resources.                                |
| <b>Programming</b> | Programming Resources.                         |
| <b>XML</b>         | XML Resources.                                 |

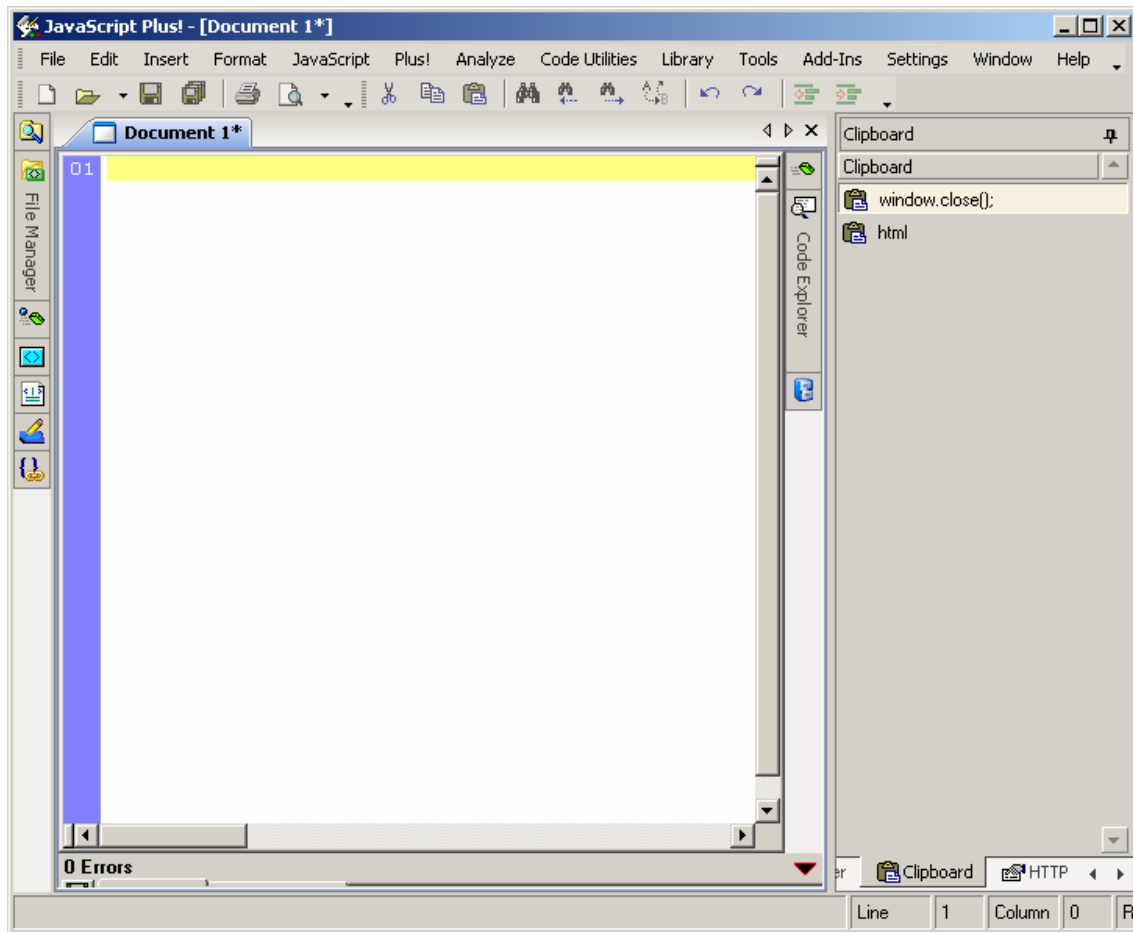
## Color Picker Help Panel

The **Color Picker Panel** gives a quick color browser reference to navigate.



## Clipboard Help Panel

The **Clipboard Help Panel** gives quick access to the items copied to the clipboard.



To **insert** an item from the clipboard panel **drag** the selected item into the active window editor and release.