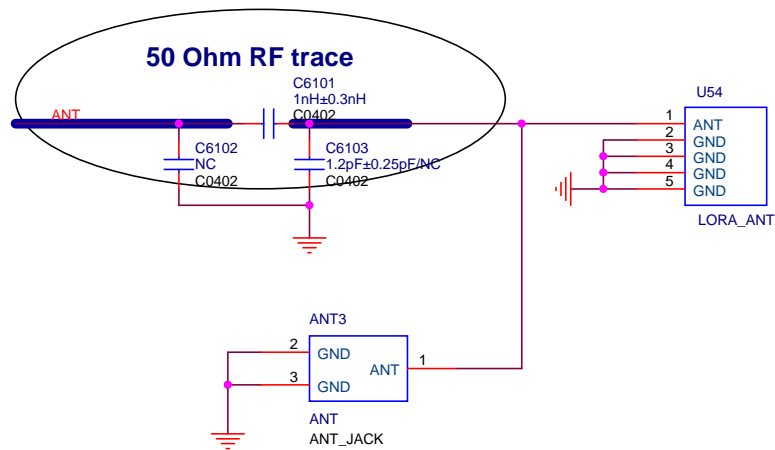
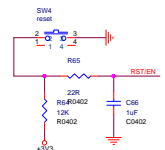
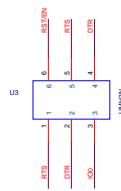


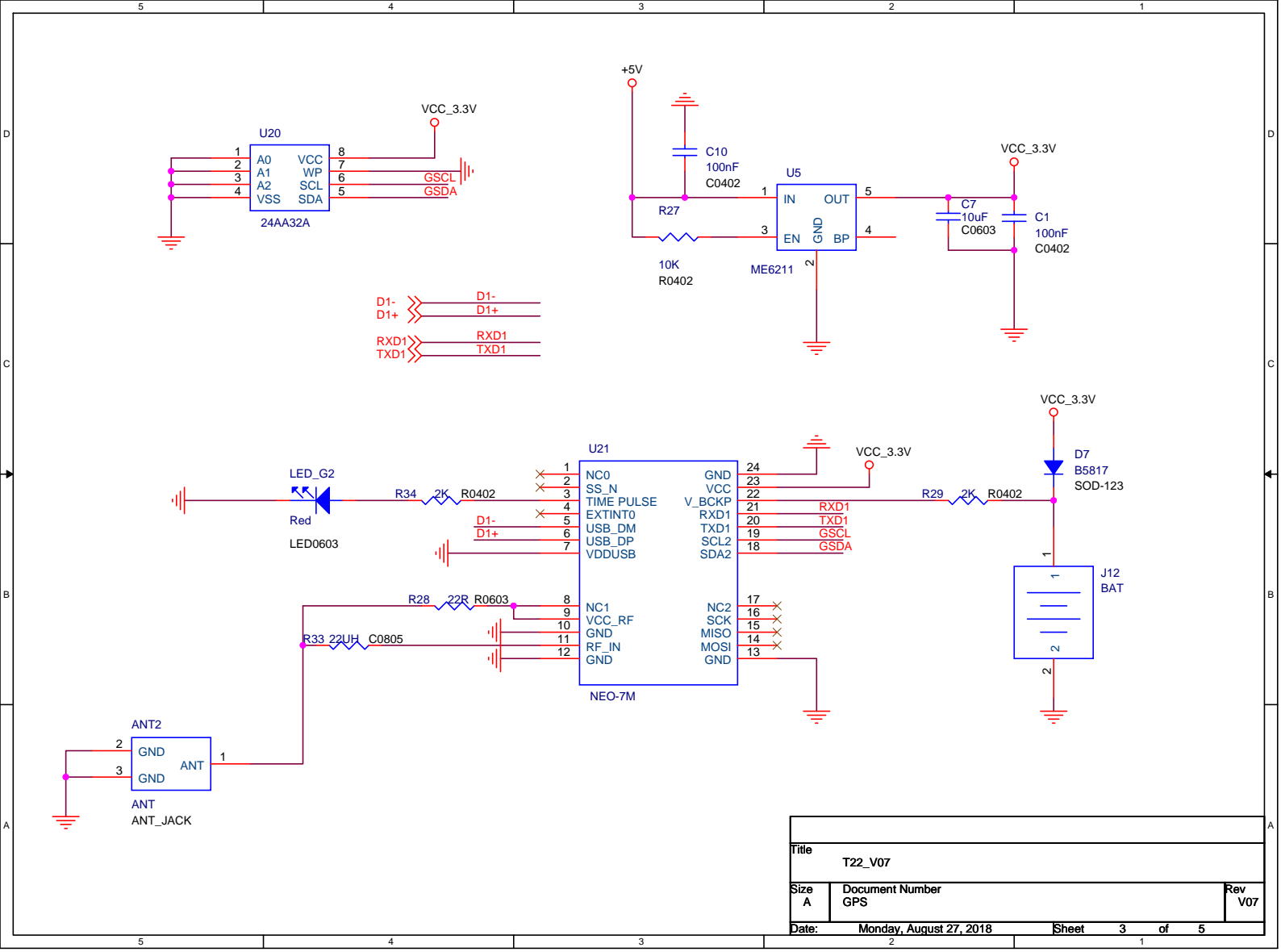
IO23=IRQ/RESET
 IO18=NSS/SEL
 IO5=SCK
 IO27=MOSI/SDI
 IO19=MISO/SDO
 IO26=DI0/IO0



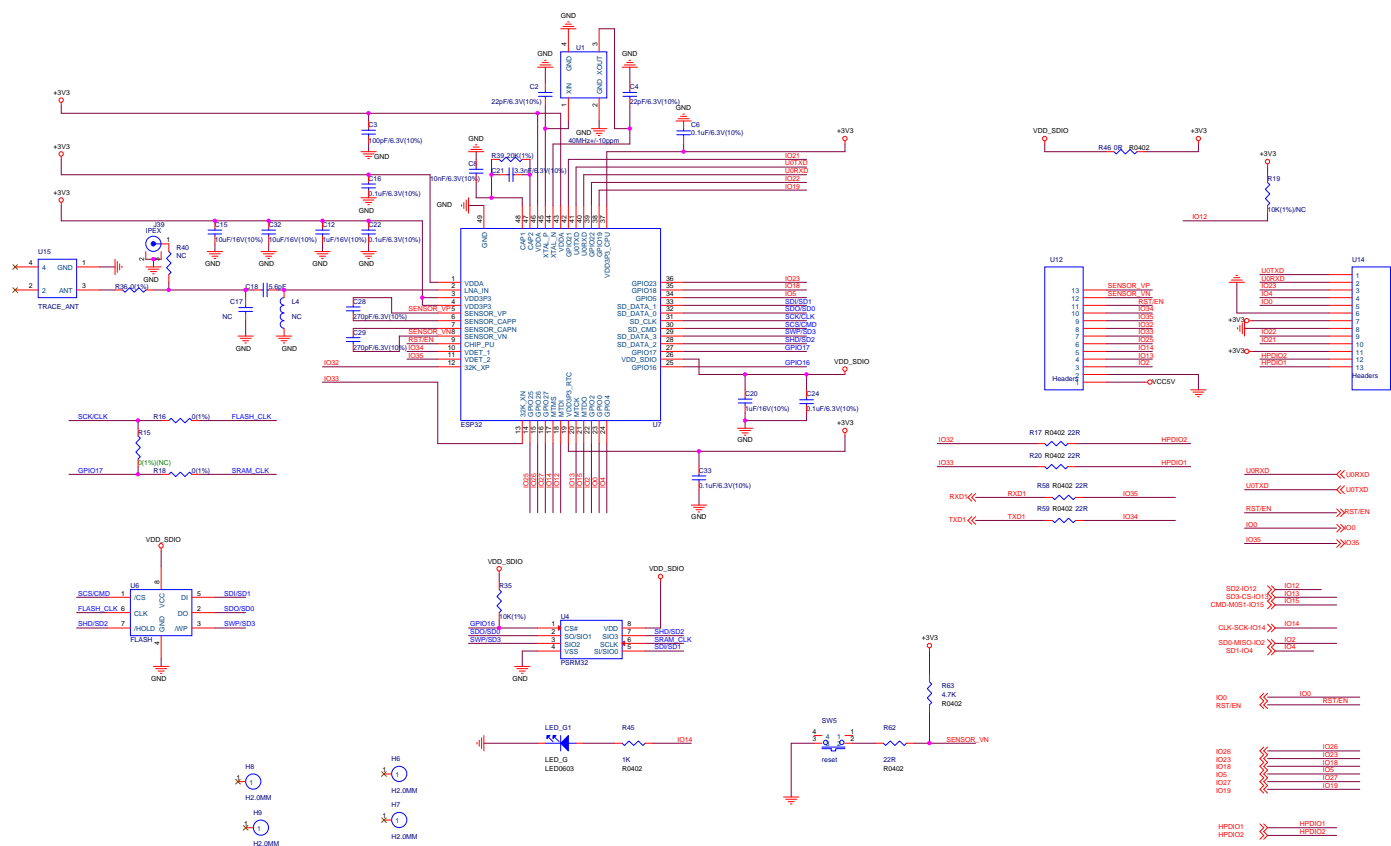
Title		
T22_V07		
Size	Document Number	Rev
A	TTGO LORA	V07
Date:	Thursday, August 30, 2018	Sheet 1 of 5



Title		
T22_V07		
Size	Document Number	Rev
C	POWER	V07
Date	Monday, August 27, 2018	
Sheet	2 of 5	



ESP32 Module:with 1.8V Flash & SRAM
The operating voltage for signals marked in blue is 1.8V.



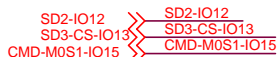
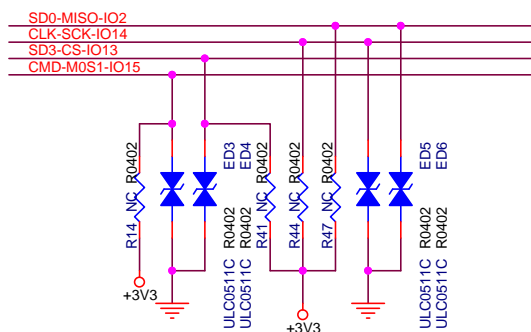
T22_V07		
File	Document Number	Rev
C	ESP32	V07
Date: Monday, August 27, 2018		
Sheet 4 of 5		

D

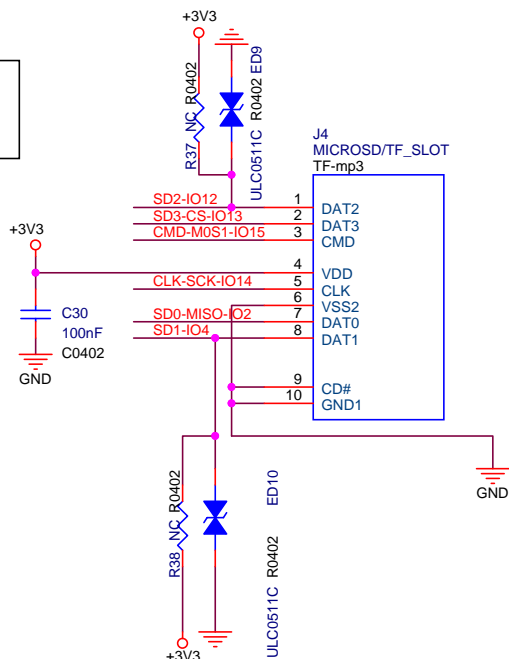
C

B

A



TF卡接法
SD3-CS-IO13
CMD-M0S1-IO15
CLK-SCK-IO14
SD0-MISO-IO2



Title		
T22_V07		
Size	Document Number	Rev
A	SD CARD	
Date:	Monday, August 27, 2018	Sheet 5 of 5