

Overview

PA is for software developers who are addicted to software development to the point that their social lives have disappeared and they have forgotten what food other than Fritos and Mountain Dew tastes like.

Goals

Week 2	Project Design Proposal
Week 3	Home (Landing) & Site Master Pages
Week 4	Data Layer
Week 5	XML Data Exchange
Week 6	Security Management
Week 7	System Quality Assurance & Test Plan

Specifications

1. The website must use an N-tier design for easy future expansion.
2. There are three web forms used in the application.
 - Log In page
 - User Account Details page
 - User Account Confirmation page

Presentation Layer Design

List of Controls, IDs & Types

Data / Label	Control Type	ControlID or Name
User Account Details		
USERNAME	Label	txtUsername
CITY	Label	txtCity
STATE	Label	txtState
FAVORITE PROGRAM LANGUAGE	Label	txtFavoriteLang

LEAST FAVORITE PROGRAM LANGUAGE	Label	txtLeastFavoriteLang
DATE OF LAST COMPLETED PROGRAM	Label	txtDate
APPLICATIONS COMPLETED TABLE	GridView	gvCompletedApps
FIND USER	TextBox	txtFindUser
EXPORT STATS	Button	btnExport
User Account Details Edit		
USERNAME	TextBox	txtUsername
CITY	TextBox	txtCity
STATE	TextBox	txtState
FAVORITE PROGRAM LANGUAGE	TextBox	txtFavoriteLang
LEAST FAVORITE PROGRAM LANGUAGE	TextBox	txtLeastFavoriteLang
DATE OF LAST COMPLETED PROGRAM	TextBox	txtDate
UPDATE	Button	btnUpdate
DELETE	Button	btnDelete
User Account Details Confirm		
USERNAME	Label	txtUsername
CITY	Label	txtCity
STATE	Label	txtState
FAVORITE PROGRAM LANGUAGE	Label	txtFavoriteLang
LEAST FAVORITE PROGRAM LANGUAGE	Label	txtLeastFavoriteLang
DATE OF LAST COMPLETED PROGRAM	Label	txtDate
CONFIRM	Button	btnConfirm
GO BACK	Button	btnGoBack

Login/Account Creation Page		
SIGN IN	Button	btnSignIn
USERNAME	TextBox	txtUsername
PASSWORD	TextBox	txtPassword
REMEMBER ME	CheckBox	cbRemember
CREATE ACCOUNT	Button	btnCreateAccount
LOGIN	Button	btnLogin


Wireframe Diagrams

Login/Account Creation Page:

The wireframe diagram illustrates the layout of a Login/Account Creation page. It features a light blue header bar with a 'Logo' placeholder on the left and a 'Sign In' button on the right. The main content area is a white rectangle containing a light blue rounded rectangle. Inside this rounded rectangle, the 'Username' label is positioned above a text input field with the placeholder text 'username'. Below the username field is the 'Password' label, followed by a text input field with the placeholder text 'password'. Under the password field is a 'Remember Me' checkbox. At the bottom of the rounded rectangle are two buttons: 'Create Account' and 'Login'.

User Account Edit Details Page:

Logo



Edit Information

User Account Details

Username

City

State

Favorite Programming Language

Least Favorite Programming Language


Date Last Program Completed

Delete

Update

User Account Confirmation Page:

Logo



Edit Information

User Account Details

Username

Username

City

City

State

State

Favorite Programming Language

TypeScript

Least Favorite Programming Language

C++

Date Last Program Completed

05/14/2020


Go Back

Confirm Changes

Once confirmed you must wait 24hrs before editing again..

User Account Details Page:

Logo



Edit Information

User Account Details

FIND USER...

Username *USERNAME*

City *CITY*State *STATE*

Favorite Programming Language *LANGUAGE*

Least Favorite Programming Language *LANGUAGE*

Date Last Program Completed *DATE*

Applications Completed GridView:

DATE	Application	ProgrammingLanguage
------	-------------	---------------------

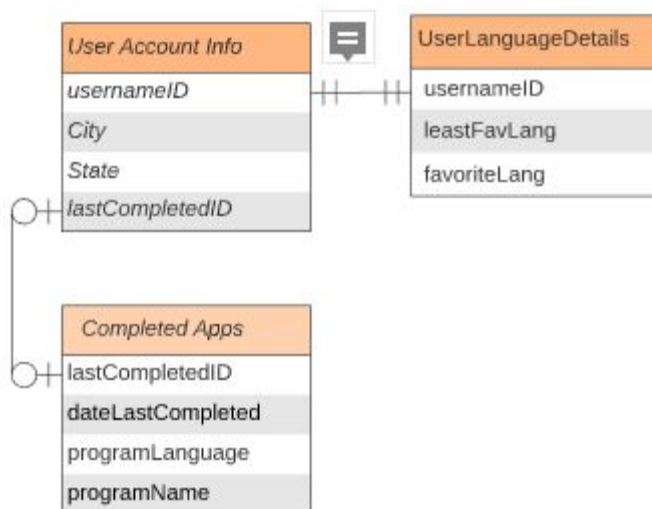
Export Report

Data Layer Design

ERD:

WEB460 Creations Entity-Relationship Diagram [ERD]

Leah Rieger | May 14, 2020



PROTOTYPES OF METHODS:

GetUsers	Return information about searched users
GetReports	Export reports to XML file in App_Data directory
GetAppByID	Returns completed applications to gridView
SetUserStatus	Deletes Account
SetAccountInfo	Updates account information
GetUsername	Get user inputted username
SetUsername	Set username to user input
GetCity	Get user inputted City
SetCity	Set city to user input
GetState	Get user inputted state
SetState	Set state to user input
GetFavorite	Get user inputted favorite programming language
SetFavorite	Set favorite programming language to user input

GetLeastFav	Get user inputted least favorite programming language
SetLeastFav	Set least favorite programming language to user input
GetDateComplete	Get user inputted last date of completed project
SetDateComplete	Set date of last completed project to user input

Business Layer Design

Validation Rules:

1. Clicking Log In validates the user information. If it is a valid user, the user is taken to the User Account Details page and the information is filled in.
2. Clicking Create Account creates a new user in the database with the username and password supplied on the Login page. The user is then taken to the User Account Details page with the username field filled in.

Required
Username
Password
Favorite Language
Least Favorite Language
Date of last Completed Project