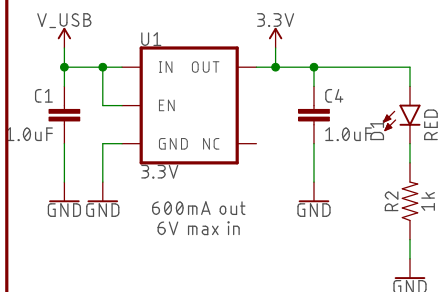
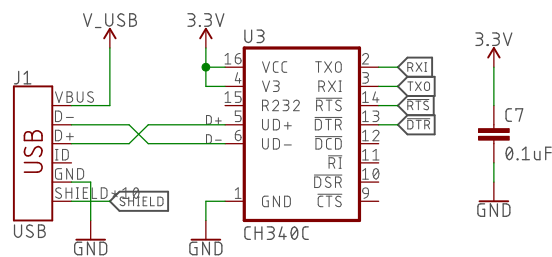


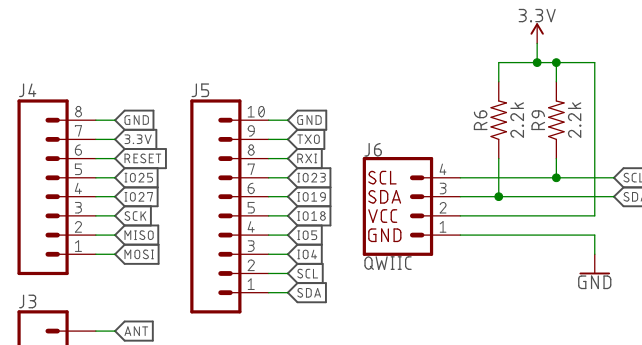
## Voltage Regulator



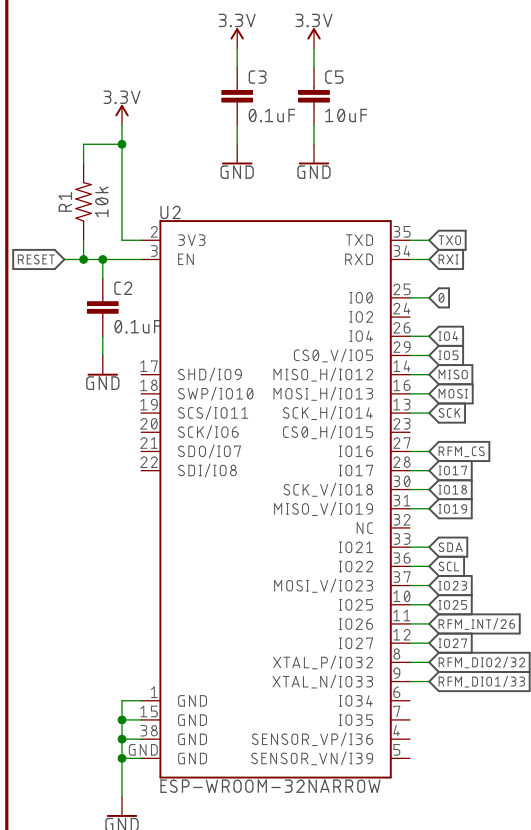
## USB-to-Serial



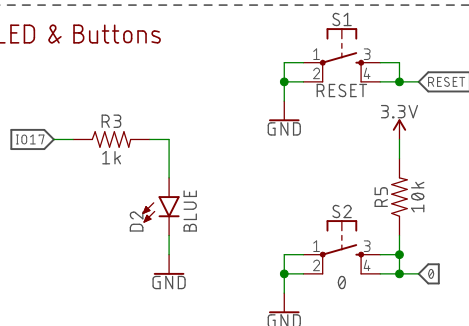
## I/O pins



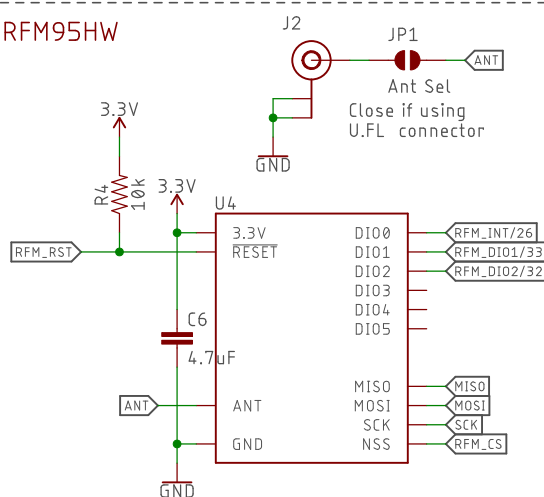
## ESP32-WROOM



## LED & Buttons



## RFM95HW

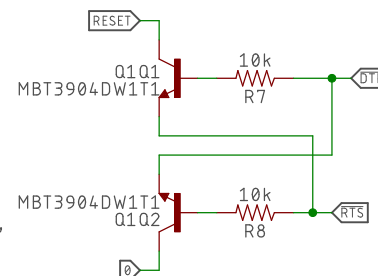


## Auto-Reset

Boot Mode Configuration

Pin	Default	Boot	Download
GPIO0	1	1	0
U0TXD	1	1	x
GPIO2	0	x	0
GPIO4	0	x	x
MTD0	1	x	x
GPIO5	1	1	x

If U0TXD, GPIO2, GPIO5 are floating, GPIO0 determines boot mode



If DTR is LOW, toggling RTS from HIGH to LOW resets to run mode.  
If RTS is HIGH, toggling DTR from LOW to HIGH resets to bootloader.

**sparkfun**

**open hardware**

Released under the Creative Commons  
Attribution Share-Alike 4.0 License  
<https://creativecommons.org/licenses/by-sa/4.0/>

TITLE: ESP32\_LoRa\_1\_Channel\_Gateway

Design by: Jim Lindblom

Revision By: Owen Lyke

REV:  
v10

Date: 10/3/2018 4:06 PM

Sheet: 1/1