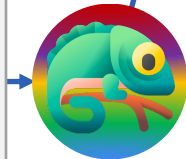



Miles hiked	
Day	Miles
Sunday	10
Monday	9
Tuesday	10
Wednesday	5
Thursday	9

Wanda went on a camping trip and logged the number of miles she hiked each day. What is the **median** of the numbers?



Knowledge Retrieval 

This table shows the number of miles Wanda hiked each day on her camping trip. The **median** is the middle value in a set of data when the data is **arranged in order**. To find the **median**, the data must be **arranged in order from least to greatest (or greatest to least)**, and then the **middle value(s) is/are determined**.


Program Generator 

Program Verifier 

```
miles_hiked = [10, 9, 10, 5, 9]
miles_hiked = sorted(miles_hiked)
middle1 = (len(miles_hiked) - 1) // 2
middle2 = len(miles_hiked) // 2
ans = (miles_hiked[middle1] + miles_hiked[middle2]) / 2
```

Program Executor 

ans = 9.0

Answer Generator 

9